



**Ministry of Internal Affairs
Border Police Department**



**Operational-analytical Report
january-march 2015
Border Police**

Q 1

Q 2

Q 3

Q 4

CHISINAU 2015

Risk Analysis Directorate

Operational analytical REPORT January-March 2015



Border Police Department
Ministry of Internal Affairs of the Republic of Moldova

Petricani, 19
MDA-2059 Chisinau, Moldova
T +373 22 259 650/637
F +373 22 259 651
dpf@mai.gov.md
rau@border.gov.md
www.border.gov.md

Chisinau, Mai 2015
Risk Analysis Directorate
BP, reference number: 35/3

Important:

This is a Border Police working document. This publication or its contents do not imply the expression of any opinion whatsoever on the part of Border Police concerning the legal status of any country/or its authority mentioned in context, or concerning the delimitation of its frontiers or boundaries. All maps, charts and graphic representations included in this report are the sole property of Border Police and any unauthorized use is prohibited.

REPORT

on operational activity of the Border Police for Q1' 2015

SUMMARY:

EXECUTIVE SUMMARY	5
PART I Operational activity indicators of Border Police	9
Indicators of people flow at border crossing points	9
Vehicles flow through border crossing points.....	12
Refusal of entry/exit in/from the RM	15
Violation of border legislation.....	17
Results of Checking document.....	18
PART II Risk Analysis	19
Illegal migration.....	19
Cigarettes Smuggling	20
Alcohol and alcohol products smuggling	21
Illegal entry/exit of vehicles in/from the Republic of Moldova	22

List of abbreviations:

ICSB	Illegal crossing of the state border (entry in the RM)
AICSB	Attempt of illegal crossing of the border state(exit from RM)
VBR	Violation of border regime
VSBR	Violation of state border regime
VBCPR	Violation of the border crossing point regime
UICSB	Uncontrolled illegal crossing of the state border (penetration)
JD	Joint detention
DTICSB	Detected traces of illegal crossing of the state border
VRSM	Violation of rules of stay in the RM
IPIM	Identified as potential illegal migrants
OC	Other contraventions
GB	Green border
BCP	Border crossing point
BPD	Border Police Department
REnM	Refusal of entry in RM
RExM	Refusal of exit from RM
MDA-UKR	Moldovan-Ukrainian border
MDA-ROU	Moldovan-Romanian border
AB	Air border
B / S	Border sign
RM	Republic of Moldova
THB	Trafficking in human beings
Q	Quarter
BPS	Border Police Sector
RD	Regional Directorate
BP	Border Police
CCTP	Center for Combating Trafficking in Persons
BMA	Bureau for Migration and Asylum
MTIC	Ministry of Informational Technology and Communications
DMT	Detentions of mobile teams

EXECUTIVE SUMMARY

This report includes the results of the operational activity of Border Police for the first quarter of 2015. Also, it reflects in particular the activity of BP subdivisions. In IQ 2015, following the border control activities, the report comprises indicators, operational and statistic data registered and documented compared with the same period of 2014. Based on the analysis of specific indicators, the report reflects the current situation and the security state at the land, river and air border segments of the Republic of Moldova. Overall, the indicators describe the operational situation, in border crossing points, as well as on „the green” sector.

The report has two parts. The first part contains an operational analysis of the main indicators per system, as *the flow of the persons and transport means, refusal of crossing the border, the cases of border legislation violation, results of documents verification, including counterfeit and forged ones.*

The second part of the report has a brief analysis of the main border related risks, based on data and statistic indicators. A main focus is on *illegal migration, cigarettes and tobacco products smuggling, alcohol and alcohol smuggling and illicit traffic of vehicles.* Furthermore, for each of these risks it is carried out an analysis of related threats. Moreover, there are highlighted trends and developments, with specific recommendations for most Border Police subdivisions.

Overall, compared to Q1, 2014 *the persons flow has increased by 17%.* This trend was due to increased mobility of persons compared to the last year, especially of Moldovan nationals (a 22% increase). Increase of persons flow has been a characteristic feature for all border police sectors. Thus, compared to the same period of the previous year a 6% increase has been registered at the MDA-UKR border crossing point. At the MDA-ROU and air border has been registered an increase by 37% and respectively 31%.

During the first three months of 2015 *the flow of transport units grew with 20%* compared to the same period of 2014. *The highest share* is at the MDA-ROU - 57% per total, followed by MDA-UKR border - 42% and BPS „Chisinau-Airport” – 1% out of the total registered crossings. To this end, the statistics show that the flow of transport means with foreign registration grew with 30% compared with Q1'2014.

In Q1' 2015, the Border Police refused border crossing of 792 persons or 3% decrease compared to the first three months of the last year. Also, it is observed a 30% increase of refusals of border crossings at the MDA-ROU border, mostly due to increasing mobility of Moldovan nationals in the context of visa liberalization regime with EU.

During the same period, the Border Police registered *860 cases of violation of border legislation, being involved 1 000 persons.* In the same line, with regards to the number of the persons involved, it registered an increase by 10% and by 6%. Analyzing the situation on the border segments, we ascertain a slightly growth in number of the detected persons for violating border legislation at the air border and a decrease at the MDA-UKR border.

The number of forged and counterfeit documents increased by over 50% compared to January-March months of 2014. The most forgeries of documents were detected in BCP at the MDA-UKR border, with a share of 54% out of total.

In general operational statistics shows a stabilization of the illegal migration phenomenon. Referring to BPS, this indicator is characterized differently. Thus, at the MDA-UKR border this indicator decreased by over 70%, while at the MDA-ROU border sector featured an increase of 27% compared to January–March2014. In BCP was ascertained a doubling of the

detected cases. The majority of registered cases in the BCP's were on account of foreign migrants wih transit the Republic of Moldova towards EU.

In Q1'2015 *is ascertained an increase in number of registered cases of the detained persons and the quantity of seized cigarettes* compared to Q1'2014. Thus, at the state border were seized over 82 thousand packs of cigarettes in 38 cases of attempts of cigarettes smuggling or by 12% more of ascertained cases compared to Q1'2014. The most cases documented by the Border Police were at the MDA-ROU border, particularly at the „green” border.

In the reporting period, enhancing of *cases of alcohol and alcohol products smuggling* is highlighted. Thus, 10 cases of alcohol and alcohol products smuggling were documented. The indicator increased by 3 times compared to the same period of 2014, but the quantity of detained alcohol increased by 19 times. This type of smuggling, it is entirely characteristic at the MDA-UKR border.

The Border Police subdivisions registered *26 cases of illegal trafficking of vehicles*. Compared to the similar period of 2014, the number of transport means detected remained the same. However, considering the situation at the border sectors, we conclude that a slight decrease of this phenomenon has been registered at the MDA-UKR border as well as an insignificant increase at the MDA-ROU border. The statistical data shows a decrease in number by 12 % of cases on the use of forged powers of attorney issued for transport means.





PART I Operational activity indicators of Border Police

Indicators of persons flow through BCPs

Indicators of persons flow at the state border of RM (mln. persons)							
Persons flow	2014, Q 1		2015, Q 1		Dynamics		
	Mln. pers.	%	mln. pers.	%	Tendency	%	
TOTAL flow	2,69	100%	3,16	100%	↗	17%	100%
RM citizens	1,89	70%	2,3	73%	↗	22%	
Foreign citizens	0,79	30%	0,86	27%	↗	9%	
The flow at the Ukrainian border (without Transnistrian sector)							51%
The MDA-UKR flow	1,52	100%	1,61	100%	↗	6%	
RM citizens	1,09	72%	1,24	77%	↗	14%	
Foreign citizens	0,42	28%	0,37	23%	↘	-12%	
The flow at the Romanian border							37%
The MDA-ROU flow	0,86	100%	1,17	100%	↗	36%	
RM citizens	0,60	69%	0,83	71%	↗	38%	
Foreign citizens	0,27	35%	0,34	29%	↗	26%	
The flow at the airline border							12%
AERO flow	0,29	100%	0,38	100%	↗	31%	
RM citizens	0,19	65%	0,23	61%	↗	21%	
Foreign citizens	0,10	35%	0,15	39%	↗	50%	

In the first quarter of 2015 the persons flow in BCP were 3,16 million crossings, which indicates an increase by 17% compared to the same period of 2014. This evolution was influenced by the increasing mobility of persons compared to previous year, mainly on account of Moldovan citizens, index which increased by 22%.

Analyzing the share of persons flow at the border sectors in the reference period, we ascertain that the flow at the MDA-UKR border holds a share of about 51% out of total or over 1,61 million crossings. Unlike the similar period of 2014, in the first three months of 2015 was recorded an increase by 6% of persons flow. This tendency has been marked by the increase in number of crossings by Moldovan nationals (by 14% compared to Q1'2014), who mostly travels regularly in the Russian Federation for employment purposes and not least the residents from border areas who are going in Ukraine for personal purposes.

Therewith, on the background of tense political events that took place within Ukraine during the last year, the flow of foreign citizens continued to decrease in the

period of January-March 2015, it is recorded a decrease by 12%, compared to Q1'2014.

The indexes of persons flow at the MDA-ROU border increased significantly by 36% compared to the same period of 2014 and accounted 1,17 million crossings. It is noteworthy that the increase was characteristic for all flow indicators at this segment border. The main reason which generated the increase of persons flow at the MD-ROU border is the visa-free regime with EU for Republic of Moldova citizens. Likewise, the weight of persons flow at the MDA-ROU border increased by 5% compared to the previous year and accounted 37% out of total (in 2014 - 32%).

Therewith, at the airline border it was recorded a significant increase of persons flow – by 31% compared to the same period of 2014, being recorded over 380 thousand crossings. The increased flow was recorded both at the exit, as well at the entry in the country. However, at this segment border it was a significant increase of foreign nationals flow, which indicator was 1,5 times higher compared to Q1'2014. Thus, the weight of persons flow at this border sector holds a 12% share total crossings.

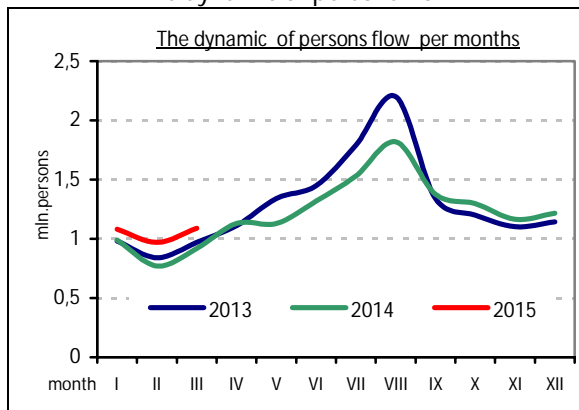
Current trends:

- *In the Q1'2015 the persons flow recorded an increase by 17% compared to the same period of 2014. This tendency was generated, generally, by:*
 - the reduction of tense political events that took place within Ukraine during 2014;
 - the returning to country, during the winter holidays, of a large number of Moldovan nationals who are working abroad;
 - the increasing number of persons who choose to spend the winter holidays on abroad, for travel purposes;
- *The segment of the MDA-UKR border holds the largest share– 51% out of total or 1,61 million crossings, wich indicates an increase of 6%, compared with the indexes recorded in the same period of the previous year.*
- *The persons flow at the MDA-ROU border recorded an essential growth by 36% compared to January-March 2014. This sector holds a share of 37% out of total people flow or 1,17 million crossings.*
- *At the airline border (BPS,International Airport Chisinau") the persons flow recorded has experienced a significant increase –by 31%, compared to Q1'2014 or over 380 thousand crossings. This segment holds a share of 12% out of total persons flow. The continuos increase can be explained by:*
 - more affordable prices for air flights;
 - the increasing preference of people to travel by plane;
 - opening the new flights to Russian Federation (Chisinau-Moscova);
 - tensions occured in Ukraine during 2014 reoriented the travellers, for journeys by plane from Russian Federation to the Republic of Moldova, thus avoiding transit throught Ukraine over the land border.
 - Increase the flow of foreign visitors arrived for tourism, studies or business purposes.

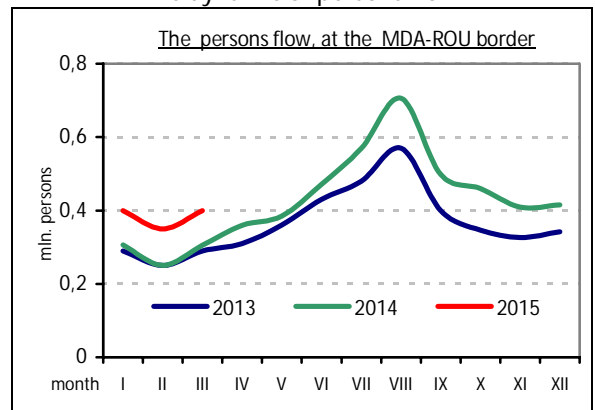
Potential forecasts:

- It is forecasted that, with the start of summer season, will increase the flow of persons, particularly at the MDA-ROU border and airline border ones;
- Thus, in the Q1'2015 it is estimated an increase of over 10% in number of crossings at the MDA-ROU border, compared to the same period of 2014;
- Also, the increase of persons flow at the airline border will be maintained in the second quarter of 2015. We estimate an increase of over 25% in number of crossings due to the beginning of summer season.
- We expect that with the decrease of the tense situation in Ukraine, the persons flow wich will cross the state border at the MDA-UKR sector will increase.

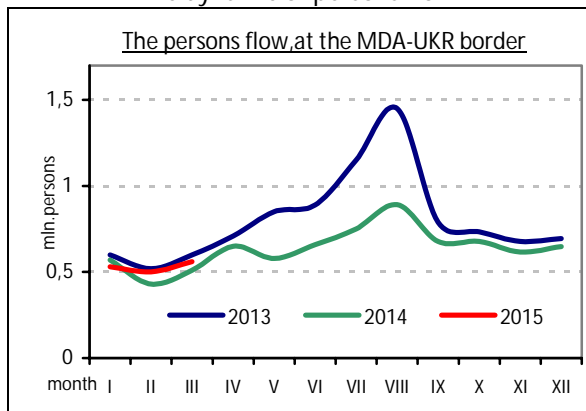
The dynamic of persons flow



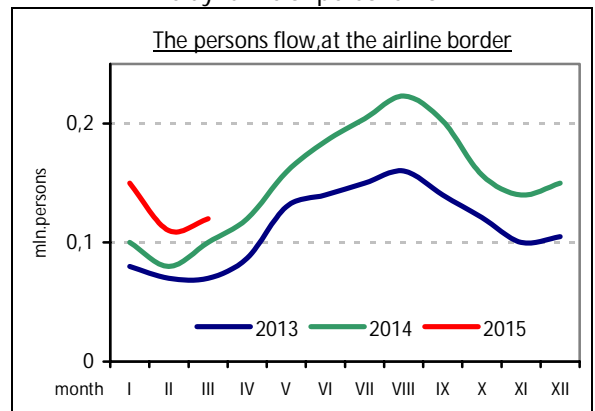
The dynamic of persons flow



The dynamic of persons flow



The dynamic of persons flow



In the graphs above we can see the dynamic of persons flow recorded in border crossing points for Q1'2015, including at the border sectors, which dynamics otherwise was analyzed previously based on statistical data from the tabel. For January -March 2015 the dynamic of crossings is more or less similar to those periods of 2013-2014.

Therewith, at the MDA-UKR border we notice that starting with February 2015 the flow persons is practically similar to the one recorded in 2013.

However, if we analyze the dynamic at the air border and MDA-ROU borders, we see a sharp increase compared to Q1 of 2013-2014 years.

Indicators of transport flow through state border crossing points

Indicators of transport flow at the state border of Republic of Moldova (thousand transport units)						
Transport flow	2014		2015		Dynamics	
	Q1	%	Q1	%	Tendency	%
TOTAL flow	593	100%	711	100%	↗	20%
RM transport	326	55%	370	52%	↗	14%
Foreign transport	267	45%	341	48%	↗	28%
The flow at the Ukrainian border (without Transnistrian sector)						
The MDA-UKR flow	272	100%	300	100%	↗	10%
RM transport	198	73%	224	75%	↗	13%
Foreign transport	73	27%	76	25%	↗	4%
The flow at the Romanian border						
The MDA-ROU flow	317	100%	406	100%	↗	28%
RM transport	125	39%	144	35%	↗	15%
Foreign transport	191	61%	262	65%	↗	37%
The flow at the air border						
AIR flow	3,84	100%	4,64	100%	↗	21%
RM aircrafts	1,92	50%	1,94	42%	↗	1%
Foreign aircrafts	1,92	50%	2,7	58%	↗	41%

In the first quarter of 2015 the number of transport units crossing the state border accounted over 711 thousand units representing an increase of 20% compared to the same period of 2014. Therewith, the statistics in the reference period shows that the flow of transport units with foreign registration increased by about 30% compared to Q1'2014, and those registered in RM by 14% compared to the same period of the previous year. This increase was generated due to the greater mobility of persons crossing the state border, especially Moldovan nationals, as a result of the visa-free regime with EU.

The MDA-ROU border accounted for the largest share (57%) of the overall number of border crossings, followed by the MDA-UKR border sector with a 42% share of the total and the air border with 1%.

If we analyze the dynamic of vehicles flow at the border sectors, as in the case of

persons flow, there is a 10% increase at the MDA-UKR border compared to Q1'2014. Compared to the dynamic of persons flow through this segment, the flow of vehicles saw an increase both for units with foreign registration (4%), as well for those registered in RM (13%).

The flow of vehicles recorder at the MDA-ROU border saw a 30% increase compared to Q1'2014. The increase of the transport flow was characteristic for all flow indicators at this sector.

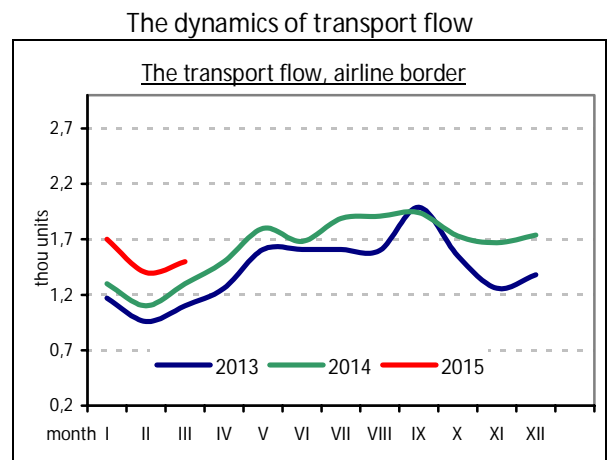
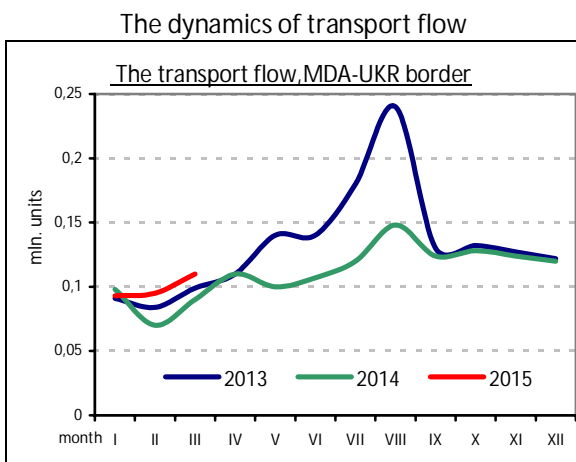
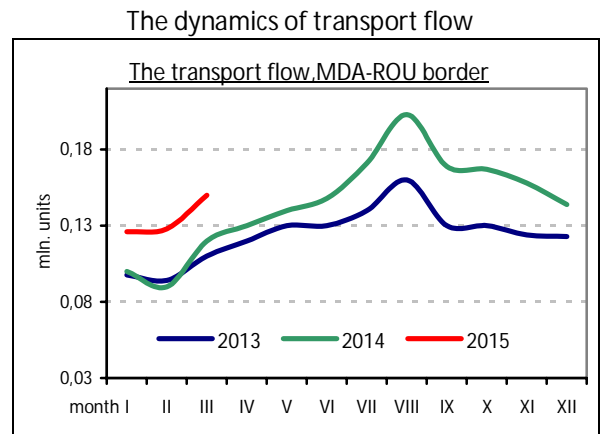
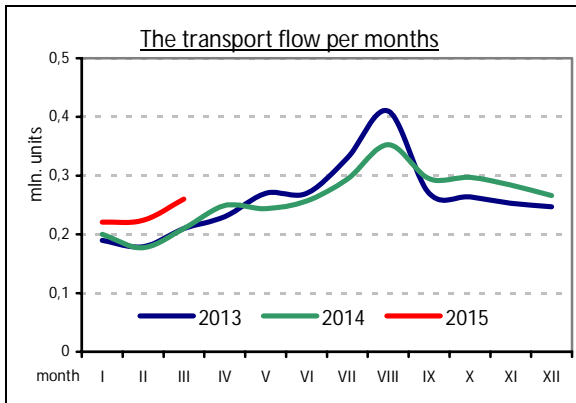
A sharp increase (21%) in the number of border crossing was also registered at the air border compared to Q1'2014, mostly due to the increase (40%) of aircrafts with foreign registration. As a result of the increasing number of passengers during 2014 and the first months of 2015 foreign airlines provided new destinations and additional flight routes, and the prices for some flights has significantly decreased.

Current trends:

- In the first three months of 2015 the number of transport units crossing the state border through BCPs accounted for over 711 thousand crossings representing 20% more compared to the same period of 2014. The increase of the transport flow was a feature for all flow indicators at this sector;
- The MDA-ROU border accounted for a 57% share out of the total number of border crossings. The transport flow at this sector increased by 28% compared to the same period of 2014. The flow of vehicles with foreign registration saw the sharpest increase (37%);
- The transport flow at the MDA-UKR border continued an upward trend, showing a 10% increase compared to Q1'2014. This trend is also characteristic for vehicles with foreign registration as well for those registered in the Republic of Moldova.

Predictions:

- The increase in the persons flow in the second quarter of 2015 will lead to an increase of the transport flow by over 5%.
- A slight increase in the transport flow with foreign registration is expected for the upcoming period, especially with the beginning of the summer season.
- In 2015 a 5% increase in the number of air border crossings is expected, as a result of the possible opening of new flight routes and the increasing number of flights.



The dynamics of the transport flow in the first three months of current year was practically the same as the one recorded in January-March 2013-2014.

At the same time, at the MDA-UKR border an increase of transport flow was recorded

in the Q1'2015, especially beginning with February 2015, compared to last year.

As for the flow of aircrafts recorded at the air border, similarly to the case of persons flow, a sharp increase was recorded compared to Q1 of 2013-2014.

Refusals of border state crossings

During the reference period the Border Police refused state border crossing to over 792 persons, representing a decrease of 25 persons or 3% compared to Q1'2014.

A decrease of 11% in the number of refusals was recorded at the MDA-UKR border, compared to the same period of the last year. It is a result of the reduction of foreigners flow at this sector.

At the same time, at the MDA-ROU border 200 persons were refused crossing

representing an increase of 31% compared to Q1'2014. For this segment, mostly, the increase was influenced by the enhancement mobility of Moldovan citizens due to visa – free regime with EU.

At the air border a slight decrease in the number of refusals was registered, representing 8% or 12 persons less compared to January-March2014. At this border sector subject to most refusals were Moldova and Russian Federation citizens.

Refusal indicators of crossing border state, general information, persons						
	Q1'2014	%	Q1'2015	%	Dynamics	%
Total	817	100%	792	100%	↓	-3%
MDA-UKR sector	528	64%	470	59%	↓	-11%
MDA-ROU sector	145	18%	190	24%	↑	31%
Air sector	144	18%	132	17%	↓	-8%

Most of the refusals of border crossing in the reference period were associated with: presentation of *invalid document*, attempt to cross the border with *expired document*, *issued alerts*, *unaccompanied minor*, *internal document* (ID card).

On one hand, we ascertain a slightly decreasing trend for most of the above mentioned indicators. On the other hand, for some indicators we see an upward trend in the number of cases.

An increase in the number of refusals was associated with: *expired document* (24%), *alert* (49%) and *invalid document* (23%). A less significant increase was recorded for the following indicators: *damaged document* (13 cases), *lack of the attachement* (5 cases) and *lack of documents* (2 cases).

REnM Indicator Refusal of entry in RM

REnM indicator, general information						
	Q1, 2014	%	Q1, 2015	%	Dynamics	%
Total	230	100%	140	100%	↓	-39%
MDA-UKR sector	119	52%	48	34%	↓	-60%
MDA-ROU sector	49	21%	35	25%	↓	-29%
Airline border	62	27%	57	41%	↓	-8%

The table above consists in the *refusals of entry* in the RM (an indicator specific for foreigners), showing a decrease in the number of persons who were refused

entry in the RM, representing a 39% decrease compared to Q1'2014. This trend is the same for all border sectors.

RExM Indicator Refusal of exit from RM

IExM indicator, general information						
	Q1, 2014	%	Q1, 2015	%	Dynamics	%
Total	587	100%	652	100%	↗	11%
MDA-UKR sector	409	70%	422	65%	↗	3%
MDA-ROU sector	96	16%	155	24%	↗	62%
Air border	82	14%	75	11%	↓	-9%

Figures on the *refusal of exit from RM* (an indicator specific for RM nationals), indicate a 11% increase in the number of persons refused to exit from RM, compared to Q1' 2014.

This trend is the same for the MDA-UKR border (3% increase) and MDA-ROU border (62% increase), except the air border where a 9 % decrease compared to January-March 2014 was registered.

Violation of border legislation

In Q1'2015 Border Police subdivisions recorded over 860 border events involving about 1000 persons. Compared to Q1'2014 we see a 10% increase in the number of cases and a 6% increase in the number of persons involved.

The increase was specific for border crossing points, particularly at the air border where the indicator registered a 2 times

increase compared to the same period of the last year.

At the „green“ border we have a decrease, both in the number of detected cases and in the number of involved persons for violation of border legislation. That decrease is related to the decreasing number of cases documented at the MDA-UKR border.

Countering the violation of border legislation cases										
Border sectors	2014,Q1				2015,Q1				Dynamics, %	
	case	%	Pers.	%	case	%	Pers.	%	cases	Pers.
Total	782	100%	953	100%	860	100%	1008	100%	10%	6%
„Green“ border	181	100%	334	100%	164	100%	288	100%	-9%	-14%
BCP	601	100%	619	100%	696	100%	720	100%	16%	16%

Violation at the „green“ border

Analyzing border violations according to the reasons or indicators shows that the „green“ border accounts for most cases of violations of border legislation related to violation of the border regime (VBR) (poaching, lack of permit in the border area, leisure purposes, etc.) with a share of 70% of total.

Violations reported for this indicator decreased compared to the same period of 2014. Violations related to VBR in BCPs account for a 50% share, representing a 10% decrease compared to the same period of 2014.

Violation of the state border in BCPs

Most cases of violation of border legislation in BCPs (over 60% of total) are associated with *violation of the rules of stay* (VRS). The statistical data reported by regional subdivisions and BP sectors, shows that most of the VRS were recorded at the BCPs under the “North” Regional Directorate – 370 persons accounting for 70% of the total violations registered in the area of responsibility or over 50% of the violations related to this indicator recorded in BCPs.

Results of documents check

Results of border control, the detected counterfeit, forged, impostor documents						
	2014, Q1		2015, Q1		Dynamics, %	
	Pers.	%	Pers.	%		
TOTAL	70	100%	106	100%	↗	51%
Counterfeit document	26	37%	38	36%	↗	46%
Forged document	43	61%	60	57%	↗	40%
Impostor	1	1%	8	8%	↗	8 times

100%

106 persons presented at the border control documents not corresponding with the conditions for crossing border. However, in Q1'2015 a 50% increase in cases of forgery and counterfeiting of documents detected by BP officers was recorded compared to the same period of 2014.

Over 50% of above-mentioned cases were reported at the MDA-UKR border. In the previous year the situation was completely different when 50% of the forged/counterfeit documents were detected at the MDA-ROU border.

Moreover, the use of forged/counterfeit documents at the MDA-UKR border increased by 3 times. At the same time, at the MDA-ROU border a 20% decrease of counterfeit

documents was recorded, accounting for 25% of the total number of detections.

The largest number of detections of counterfeit, forged, impostor travel documents occurred at "Chisinau-Airport" (70%).

The share of forged documents detected at "Chisinau-Airport" BPS accounted for 22%, showing a 22% increase compared to January-March 2014. Numerically, the detected forgeries increased with 4 units.

The analysis indicates that persons use counterfeit, forged, impostor documents when crossing the border for illegal migration purposes.

PART II Risk Analysis

Illegal migration

Illegal migration is the alternative used by the persons who use illegal ways to get abroad.

In the Republic of Moldova the phenomenon is associated with *illegal border crossing through different methods and routes for illegal migration purpose, illegal stay of the migrant in the host state.*

In order to illegally cross the border migrants frequently use different forms and methods, including:

- illegal border crossing at the "green" sector;
- crossing border through BCPs using counterfeit/forged/ impostor documents;
- Middle East nationals also use a clandestine way to illegally cross the border by hiding in heavy trucks carrying different materials.

In terms of illegal migration Border Police subdivisions recorded 20 events

involving 35 persons, representing a 13% increase compared to Q1'2014. Analyzing illegal migration as phenomenon we see a relatively stable trend compared to the same period of 2014.

However, this indicator is completely different when it comes to the border sectors. Thus, a 32% decrease was recorded at the "green" border, while in BCPs the number of cases of illegal migration detected doubled. This is mostly associated with foreign citizens using the Republic of Moldova as a transit country to the EU.

At the MDA-UKR border this indicator showed a decrease by over 70%, while at the MDA-ROU border it increased by 27% compared to January-March 2014.

At the "Chisinau-Airport" BPS, in the analyzed period, 13 persons were documented compared to 5 persons in Q1'2014.

Illegal migration, persons

Sectors	Q 1, 2014		Q 2, 2014		Q 3, 2014		Q 4, 2014		Q 1, 2015		Compared to Q1'2014
	detention	crossing	detention	crossing	detention	crossing	detention	crossing	detention	crossing	
Total	31	25	25	19	23	7	21	26	35	20	-2%
MDA-UKR	18	4	16	4	6	3	2	5	3	3	-73%
MDA-ROU	8	18	7	11	11	4	8	21	19	14	27%
Air	5	3	2	4	6	0	11	0	13	3	100%

Cigarettes smuggling

Smuggling with cigarettes at the Republic of Moldova borders grew in recent years as traffickers rely on considerable profit from neighbouring states black markets trade.

The table below shows data on cigarettes smuggling in the Q1'2015.

Thus, Border Police subdivisions registered 38 events involving 45 persons. As a result over 82 thousand cigarette packs were seized.

The MDA-ROU border accounted for the largest share of documented cases (82%).

The detection of cases and the number of detained persons show a slight increase.

Cigarettes smuggling, general information						
	Q1 2014	Q2 2014	Q3 2014	Q4 2014	Q1 2015	Compared to 2014, Q1
TOTAL						
Cases	34	42	39	35	38	12%
Persons	39	50	54	47	45	15%
Quantity (pcs)	72399	115494	119993	97353	82388	14%

According to statistics on border sectors most of the events occurred at the „green” border with Romania. Thus, in the Q1'2015 the quantity of cigarettes smuggling seized at the „green” border increased with more than 70% compared to Q1' 2014.

Compared to the same period of 2014, cigarettes and tobacco products smuggling seen as phenomenon shows a sharp increase in the number of countered cases (90%).

Alcohol and spirits smuggling

In the first quarter of 2015 the illicit trafficking in alcohol and alcoholic products persisted. According to statistics this type of smuggling is specific for the MDA-UKR border. This is mostly due to the existing difference in prices on Moldova and Ukraine "black markets".

In the reporting period, 10 cases of illicit trafficking in alcohol and alcoholic products were documented. This indicator saw a 3 times increase compared to

the respective period of 2014. The quantity of seized alcohol also significantly increased compared to the above-mentioned period (19 times).

Cases of alcohol and spirits smuggling were recorded both at the "green" border and in BCPs. However, the larger quantities were registered at the "green" border.

Alcohol and spirits smuggling							
	Q1'2013		Q1'2014		Q1'2015		Compared to Q1'2014
	retention	Illegal crossing	retention	Illegal crossing	retention	Illegal crossing	
TOTAL							
Cases	3	1	3	0	9	1	3 times
Persons	3	0	1	0	12	0	12 times
Quantity	190	1 800	421	0	2 990	5 000	19 times

Alcohol and spirits smuggling was mainly recorded in the area of responsibility

of the "North" RD (60%), where over 6,5 tons of alcohol and spirits were seized.

Illegal entry/exit of vehicles to/from Republic of Moldova

In the Q1'2015, in BCPs were detected 26 transport units which owners or trustees intended to illegally enter/exit to/from Republic of Moldova. Most of the offences (80% of total) were committed by the Republic of Moldova citizens.

Compared to the similar period of 2014, the number of the detained vehicles was the same. The data recorded at border sectors shows a slight decrease of this phenomenon at the MDA-UKR border along with a insignificant increase at the MDA-ROU border.

At the same time, the data from the reference period shows a decrease in the

number of recorded events involving forged powers of attorney (12%) compared to Q1'2014, which is mainly influenced by the decrease of such cases at the MDA-UKR border.

The number of cases of detected forged/counterfeit registration certificates increased by 33% compared to the same period of 2014. Such cases were registered both at the MDA-UKR border and at the MDA-ROU border.

It is expected that with the beginning of summer this phenomenon will have an upward trend.

Illicit trafficking of vehicles to/from Republic of Moldova						
Reason of detention in BCPs	Q1 2014	Q2 2014	Q3 2014	Q4 2014	Q1 2015	Compared to Q1'2014
TOTAL	26	31	27	23	26	=
Modified body	1	2	1	2	2	100 %
Modified engine or mismatch with that indicated in r/c	1	5	5	1	-	- 100 %
Forged/counterfeit registration certificate	3	4	6	5	4	33%
Forged/counterfeit power of attorney	18	18	15	13	16	-12%
Document not belonging to the holder	1	-	-	1	2	100%
Others	2	2	-	1	2	=
