



**Ministry of Internal Affairs
Border Police Department**



**Operational-analytical Report
January-June 2015
Border Police**

SEM 1

SEM 2

CHISINAU 2015

Risk Analysis Directorate

SEMESTRIAL REPORT January - June 2015

on operational activity of the Border Police



Border Police Department
Ministry of Internal Affairs of the Republic of Moldova

19 Petricani
MDA-2059 Chisinau, Moldova
T +373 22 259 650/637
F +373 22 259 651
dpf@mai.gov.md
rau@border.gov.md
www.border.gov.md

Chisinau, August 2015
Risk Analysis Directorate
BP, reference number: 35/3

Important:

This is a working paper of Border Police. This publication in question, as well as its content, doesn't imply the expression of someone opinion of the Border Police on the legal status of any state and/or its authority mentioned in context, on the delimitation of its frontiers and boundaries. The all tables, maps and graphic representations included in this report are exclusive property of Border Police and any unauthorized use is prohibited.

REPORT**on operational activity of the Border Police SEM 1'2015****CONTENT:**

EXECUTIVE SUMMARY	5
PART I Operational activity indicators of the Border Police	7
Indicators of persons flow through the border crossing points.....	7
Indicators of transport flow through state border crossing points.....	10
Refusals of state border crossing.....	13
Violation of border legislation	15
Results of checking documents	16
PART II Risk Analysis	17
Illegal migration.....	17
Illegal traffic of cigarettes and tobacco products	18
Illegal traffic of alcohol and alcoholic products	19
Illegal traffic of transport units	20
Illegal traffic of arms and ammunition	21
Illegal circulation of narcotic, psychotropic substances and precursors	21

List of abbreviations:

ICSB	Illegal crossing of the state border (at the entry in RM)
AICSB	Attempted illegal crossing of the state border (at exit from RM)
BBR	Breach of the border regime
VSBR	Violation of state border regime
VRCCB	Violation of the regime at the checkpoint and crossing border
UICSB	Uncontrolled illegal crossing of the state border (penetration)
JR	Joint restraint
DTICSB	Detected traces of illegal crossing of the state border
VRM	Violation of residence in RM
IPIM	Identified as potential illegal migrants
OC	Other contraventions
GB	Green border
BCP	Border crossing point
BPD	Border Police Department
REM	Refusal at the entry in RM
IEM	Interdiction of exit from RM
MDA-UKR	Border sector with Ukraine
MDA-ROU	Border sector with Romania
AB	Airline border
B/S	Border sign
RM	Republic of Moldova
THB	Trafficking in human beings
Tr./T	Trimester
SEM	Semester
SBP	Sector of Border Police
RD	Regional Directorate
BP	Border Police
CCTP	Centre for Combating Trafficking in Persons
BMA	Bureau for Migration and Asylum
MITC	Ministry of Information Technology and Communications
RMT	Retentions of mobile teams

EXECUTIVE SUMMARY

The present report includes the results of operational activities of the Border Police for SEM 1 of 2015. At the same time, it reflects particularly, the activity within the subdivisions of the border authority. Following the activity of state border control for the reference period, the document itself contains indicators, statistical and operational data observed and documented, comparable to the same period of 2014. Based on the analysis of specific indicators, the report reflects an overview of the current situation and the state of border security segments terrestrial, aquatic and aerial of the Republic of Moldova. Overall the indicators provide a picture of the operational situation, both border crossings, as well as on the "green" sector of it.

The report is structured in two parts. **The first part** contains an analysis of its key operational indicators per system, as well as the flow of persons and transport means, unauthorized border crossings, border legislation infringements, the results of the documents checking, counterfeit and forged documents.

The second part of the report contains a summary and an analysis of key risks at border, based on statistical data and indicators. In particular, is reflected *illegal migration, illegal trafficking of cigarettes and tobacco products, illicit alcohol and alcoholic beverages, illegal trafficking of transport means, etc.* Furthermore, for each risk referred previously is performed an analysis of the threats identified. Also, are reflected the certain trends and developments, with specific recommendations for most subdivisions of the Border Police.

Particularly, the overall **flow of persons has been increasing by 16% compared with SEM1 '2014**. This evolution was influenced by the increasing mobility of persons compared to last year, both citizens of the Republic of Moldova and foreign ones, with 17% and 14 % each. Increase of the flow of persons was characteristic to all border sectors. Thus, at the border crossing points on the MDA-UKR sector was recorded an increase of 5% compared to the same period of the last year, while from the MDA-ROU sector and aerial of 30% and 31% respectively.

The flow of transport units during the first six months of 2015 increased by 20% compared to the same period of 2014. The largest share holds the segment MDA-ROU - 58% of the total, followed by MDA-UKR border with share of 41% of total registered crossings. At the same time, statistics show that the flow of transport units with foreign registration has been growing by over 30% compared to SEM 1'2014.

Border Police did not authorized border crossing to about 2000 persons in SEM 1 '2015 or 14% more than in the first six months of the last year. However, at the border MDA-ROU is observed an increase in the number of non-authorizations, by 24%, which is largely influenced by increased mobility of Moldovan citizens following the liberalization of the visa regime with the EU.

In the period under review, the Border Police has registered 1863 cases of violation of the border legislation that involved 2180 persons. Compared to the previous year we have an increase of 24% in the number of cases registered and of 16% of the number of persons involved. Analysing the situation on the border segments we state a visible increase in the number of persons documented for the violation of the border legislation on the air border sector. However, on the "green" border the number of cases registered concerning the violation of the border legislation decreased by 6%.

The number of forged and counterfeit documents significantly increased compared to January-June of 2014, with more than 70%. On the border sectors, the most forged documents were found in the BCP on UKR-MDA border segment, with a share of 60% of the total.

The operational statistics generally denotes an increase in illegal migration, but on border sectors this indicator is characterized differently. Thus, on the border with Ukraine this indicator decreased by 26%, while for the segment of the Moldovan-Romanian and border airline was characteristic a considerable increase of 1.9 and 3.6 times respectively each, compared to the period January-June 2014. At the same time, at the border crossing points was registered an increase of 5 times

of the cases discovered. Much of the increase in registered cases in BCPS were on account of foreign migrants who use Republic of Moldova as a transit country to the EU.

In the first half of 2015 is registered an increase in the number of cases and individuals involved in illicit traffic of cigarettes, compared to the same period of the last year, while the amount of cigarettes seized dropped insignificantly. Thus, at the border were raised over 175 000 packs of cigarettes in 92 cases of attempted smuggling of cigarettes or 18% more than in the reference period of 2014. The largest share of cases documented by the Border Police holds Moldovan-Romanian border segment, with 80 percent of the total. These cases were registered both on the "green" sector of the state border, as well as at the border crossing points.

During the analysed period of the current year, is highlighted the intensification of the phenomenon of smuggling alcohol and alcoholic products compared with SEM1'2014. Thus, were documented 23 cases of illicit trafficking of alcohol and alcoholic products, the indicator increasing by 35% compared to the corresponding period of 2014, and the amount of alcohol apprehended increased by 62%. This category of smuggling is entirely characteristic for the Moldovan-Ukrainian border segment.

The border police subdivisions documented 68 cases of illegal trafficking of transport means. Compared to the same period of 2014, the number of such cases increased by 15%. The increase was largely due to the documented cases at the Moldovan-Romanian border, where the indicator rose by 30%. Compared with SEM 1'2014, there is an increase in the number of violations on the main reasons, as well as false / forged proxies issued for using transport means, false / forged registration certificates and altered VIN code.

PART I Operational activity indicators of the Border Police

Indicators of persons flow through the border crossing points

Indicators of persons flow at the state border of the Republic of Moldova (mln. persons)							
Flow of persons	2014, SEM 1		2015, SEM 1		Dynamics		
	mln. pers.	%	mln. pers.	%	Tendency	%	
TOTAL flow	6,27	100%	7,29	100%	↗	16%	100%
Citizens of RM	4,37	70%	5,12	70%	↗	17%	
Foreign citizens	1,90	30%	2,17	30%	↗	14%	
Flow at the border with Ukraine (except the Transnistrian sector)							49%
MDA-UKR flow	3,42	100%	3,59	100%	↗	5%	
Citizens of RM	2,50	73%	2,70	75%	↗	8%	
Foreign citizens	0,92	27%	0,89	25%	↘	-3%	
Flow at the border with Romania							37%
MDA-ROU flow	2,08	100%	2,70	100%	↗	30%	
Citizens of RM	1,41	68%	1,85	69%	↗	31%	
Foreign citizens	0,67	32%	0,85	31%	↗	27%	
Flow at the airline border							14%
AERO flow	0,763	100%	1,0	100%	↗	31%	
Citizens of RM	0,464	61%	0,569	57%	↗	23%	
Foreign citizens	0,299	39%	0,431	43%	↗	44%	

For the first half of 2015 the flow of persons at the BCPs was 7.29 million crossings compared to the same period of 2014, it was increased by 16%. This indicates a relatively greater mobility of persons compared to last year, both Moldovan citizens and foreign ones, with 17% and 14% each.

If we analyse the flow of persons share according to border areas in the reference period, the largest share is held by the Moldovan-Ukrainian sector - 49% of the total, or about 3.6 million crossings. Unlike the similar period of 2014, in the first half of 2015 was registered a 5% increase in the flow of persons. Typically, this segment of the border is traditionally on the top of the leader board on the number of crossings. This increase is mainly on account of Moldovan citizens who travel regularly for work purposes into Russian Federation, despite some restrictions and internal rules of registration, presence and stay on its territory. Also, once with the start of the summer season, this segment is requested by Moldovan tourists who have ventured into a trip to Ukraine, because Ukrainian seaside is the nearest one. At the same time, the flow of foreigners in this segment continued to be down 3% versus SEM1'2014 because of socio-political situation in Ukraine.

For the Moldovan-Romanian sector was characteristic a significant increase in person's flow indicator by 30% compared to the same period of 2014 and amounted to 2.7 million of crossings. The increase was recorded for all flow indicators on this segment, and this continued

being generated by the EU visa liberalization regime for the citizens of the Republic of Moldova. Besides, the amending and supplementing of the list of travel documents accepted for entry to the Republic of Moldova, according to which citizens of European Union member states may enter the Republic of Moldova on the basis of identity cards, intensified the traffic on this segment in June month.

Thus the average flow of persons at the border with Romania increased by 4 percentage points from the previous year and represented 37% of total (2014-33%). Most requested border crossings with the European Union were "Leu eni-Albita", "Sculeni-Sculeni" and "Giurgiulesti-Galati" where the flow of persons has increased on average 1.3 times compared to the SEM 1 '2014.

Also, a considerable increase of persons flow was recorded also at airline borders - 31% compared to the same period in 2014, being registered over one million crossings. Moreover, the number of Moldovan citizens' crossings increased by 23%, while of foreign citizens is 1.5 times higher than 1'2014 SEM. This development indicates that the preferences of Moldovans to travel by air are increasing, as well as the mobility of foreigners in the Republic of Moldova, either for business, tourism or leisure. In addition, we specify that growth is generated by starting of the the summer period. Factors leading to attracting greater numbers of passengers in this segment

were: the advantageous prices of air tickets, especially for destinations that are requested; launching of new routes (Chisinau-Barcelona, Chisinau-Kiev), increase the frequency of regular flights (Chisinau-Madrid, Chisinau -

Riga), as well as socio-political situation in Ukraine. The share of persons flow on the border segment has a share of 14% of all crossings.

Actual tendencies:

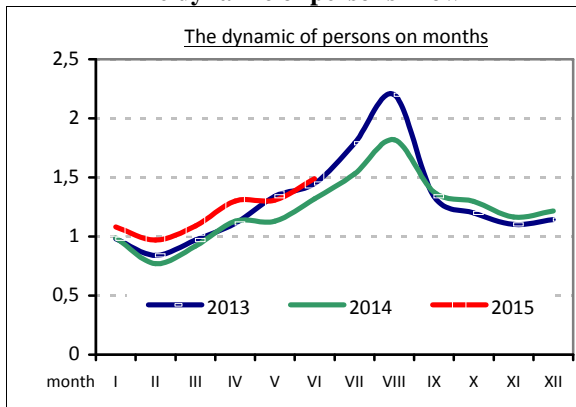
- *UKR-MDA segment holds the largest share - 49% of total or about 3.6 million crossings, the Values of persons' flow who crossed the state border in SEM 1'2015 recorded an increase of 16% compared to the same period of 2014, indicating also an increase in the mobility of persons. In general, the present evolution was influenced by:*
 - ✓ increase in the number of Moldovan citizens who choose to spend their holidays abroad for purposes of recreation, tourism and leisure;
 - ✓ increase the flow of foreign visitors arriving for the purpose of tourism, study or business;
 - ✓ reduction of tense political events that took place in Ukraine during 2014;
- indicator increasing by 5% compared to indices registered of the same period of the last year. This segment of the border, is traditionally the top ranking on the number of crossings.
- *A significant increase of 30% of the persons' flow was registered at MDA-ROU segment, constituting 2.7 million of crossings. This sector has a share of 37% of the total flow of persons.*

The persons' flow of airline border segment (SBP "Chisinau International Airport") recorded a significant increase - 31% versus SEM 1'2014, representing over one million of crossings. Persons' flow share amounted to 14% of the total figure.

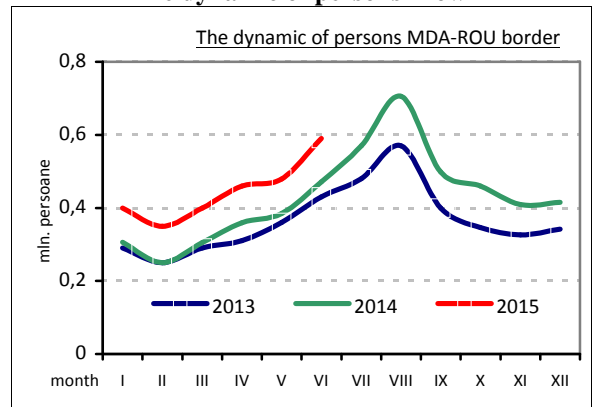
Potential forecasts:

- Increase of persons' flow at the border will continue in the next three months of 2015, especially during the summer period, it is generated by a higher mobility of persons as a result of the EU visa liberalization regime for Moldovan citizens;
- No doubt that with the entry into force on 19 June 2015, of the amendment of the Government Decision no. 765 of 18 September 2014, which allowed the EU Member States' citizens to cross the border to the Republic of Moldova on the basis of ID cards will increase the number of crossings, especially at MDA-ROU segment of the border and airborder;
- Thus, for trimester 3'2015 is expected an increase of over 25% in the number of crossings on the segment MDA-ROU, compared to the same period of 2014;
- Similarly, we expect an increase in the persons' flow on aero segment of about 30% in the third quarter of 2015. One reason the flow to grow in this segment is the increase of flights frequency to rest areas;
- As regards the persons' flow who will cross the state border on the sector MDA-UKR in Tr.3'2015, we evaluate it will continue to increase, especially crossings of Moldovan citizens.

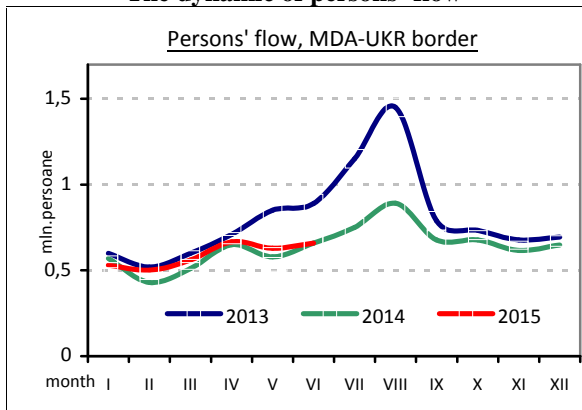
The dynamic of persons' flow



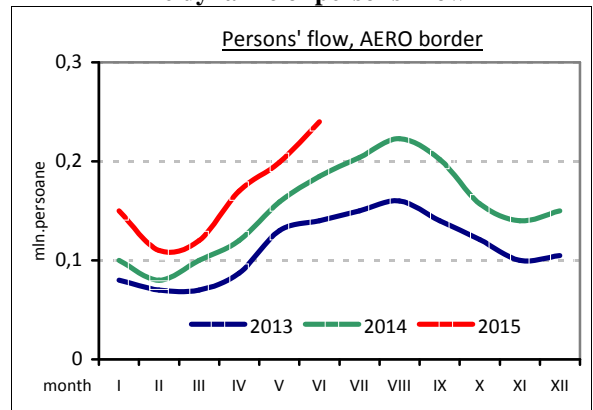
The dynamic of persons' flow



The dynamic of persons' flow



The dynamic of persons' flow



From the evolution of the dynamic of the flow of persons registered at crossing points within the period January-June of 2015, it is observed that it is similar to that recorded in the period January-June of the years 2013 to 2014.

At the same time, on the Moldovan-Ukrainian border sector we notice that the persons' flow during the period February-May was slightly up compared to SEM 1 2014, and in June the dynamic returned at the index of the

last year. One reason for maintaining a relatively constant flow of persons in this sector was that with the start of the summer season, some of Moldovans returned from work from the Russian Federation, went to rest by the aero-sector or through Moldavian-Romanian.

Thus, if we analyse the persons' flow at the air border and MDA-ROU, then we find that it is growing compared to SEM 1 of the years 2013-2014.

Indicators of transport flow through state border crossing points

Indicators of transport flow through state border of the Republic of Moldova (mln. Transport units)							
Transport flow	2014, SEM 1		2015, SEM 1		Dynamics		
	mln. pers.	%	mln. pers.	%	Tendency	%	
TOTAL flow	1,34	100%	1,61	100%	↗	20%	100%
RM Transport	0,73	54%	0,81	51%	↗	11%	
Foreign transport	0,61	46%	0,80	49%	↗	31%	
The flow at the border with Ukraine (except Transnistrian sector)							41%
The MDA-UKR flow	0,59	100%	0,67	100%	↗	14%	
RM Transport	0,44	75%	0,49	73%	↗	11%	
Foreign transport	0,15	25%	0,18	27%	↗	20%	
The flow at the border with Romania							58%
The MDA-ROU flow	0,74	100%	0,93	100%	↗	26%	
RM Transport	0,28	38%	0,32	34%	↗	14%	
Foreign transport	0,46	62%	0,61	66%	↗	33%	
The flow at the airline border							1%
AERO flow	0,0088	100%	0,010	100%	↗	14%	
RM aircrafts	0,0043	49%	0,0041	40%	↘	-7%	
Foreign aircrafts	0,0045	51%	0,006	60%	↗	33%	

The number of transport units registered at the border crossing points during the first six months of 2015 was 1.61 million crossings, which represents an increase of 20% compared to the same period of 2014. The significant increase was largely on account of transport units registered abroad, which indicator increased by over 30% compared to SEM1 2014. Greater mobility of persons crossing the state border, especially Moldovans, following the liberalization of the visa regime with the EU and that the vehicles registered in other states may find themselves on the territory of the Republic of Moldova indefinitely, were the basic factors which overall influenced this indicator.

The highest flow of transport units was registered at the Moldovan-Romanian border, accounting for 58 per cent of the total. In this segment of the border the transport units' flow in the first half of 2015 increased by 26% compared to January-June 2014. Moreover, the increase of the transport units' flow means was

characteristic for all flow indicators on this sector. On the Moldovan-Ukrainian segment the transport units flow, as in case of persons flow has increased by 14% over the first six months of 2014. Unlike the indicators of the persons' flow on this segment, for the flow of transport means registered abroad was characteristic the increase by 20%.

The significant increase was recorded in the number of sailings on aero segment - 14% more than the same period of the last year. This trend was particularly influenced by the flow of foreign aircrafts, which increased by over 30%. Because during the first six months of 2015 by foreign airlines was essentially reduced the flight price, were diversified the air routes and were offered new destinations, the number of passengers in this segment increased significantly. Thus, the Moldovans using the land transport now prefer to travel by air transport. The share of the aircrafts on the aero segment amounted to 1% of the total.

Actual tendencies:

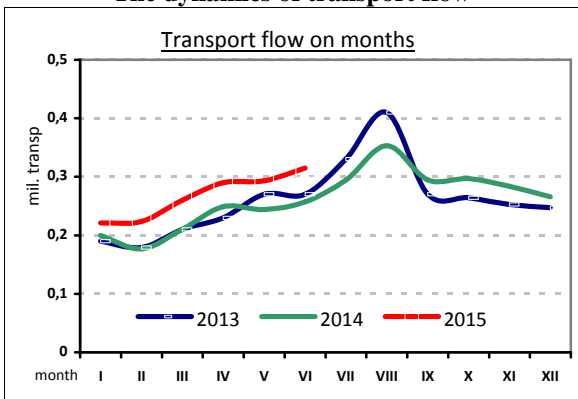
- In SEM 1 2015 the number of cargo units recorded at the border crossings was 1.61 million of crossings or 20% more compared to the same period of 2014. At the same time increased the flow of foreign transport by 30%, and one of the reasons was the increase in mobility of persons crossing the state border, especially Moldovans, following the liberalization of the visa regime with the EU;
- The MDA-ROU segment holds the largest share of 58% of total amount of crossings. However on this sector has greatly increased the flow of transport units by 26% versus the same period of 2014, the fact influenced by the increase of transport units' flow registered abroad by 33%;

- At the same time, the transport units flow on the border segment MDA-UKR has been in a relatively steady growth compared to SEM 1 2014, registering 14% more. This tendency was valid both for units registered abroad and for those registered in the Republic of Moldova.

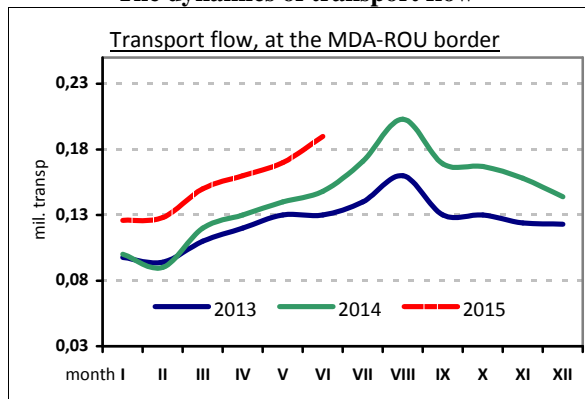
Potential forecasts:

- According to estimates, the liberalization of visa regime with the EU will continue to influence transport units' flow growth in the third quarter of 2015, especially those that will be recorded on ROU-MDA border segment;
- Also, considering the summer period, it is expected an increase in the coming period of the transport units' flow.
- Similarly, in Tr.3 2015 is evaluated a 5% increase in the number of border crossings recorded in the aero segment, generated by the possible opening of new routes and increase of the number of flights.

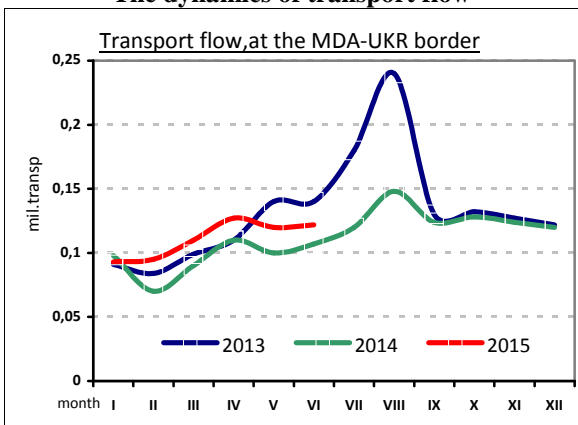
The dynamics of transport flow



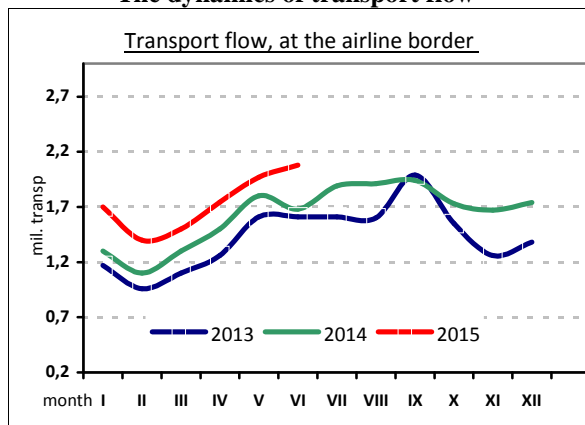
The dynamics of transport flow



The dynamics of transport flow



The dynamics of transport flow



In the first half of the year, the dynamic of transport units flow was substantially similar to that recorded in January-June of the years 2013 - 2014.

At the same time, on MDA-UKR segment is observed an increase of transport

flow towards SEM 1 2014, since February of this year.

At the same time, the significant increase of the transport units flow, like if the flow of persons was registered on the Moldovan-Romanian sector and aero sector compared to SEM 1 of years.

Refusals of the border state crossing

In the first half of the current year by the subdivisions of the Border Police has been refused the continuation of the journey to a number of 1979 persons, due to the non-compliance with the conditions laid down by the legislation, which is by 14% more compared to the same period of 2014. This tendency applies to all border sectors.

Thus, the most significant number of refusals was fixed on the Moldovan-Ukrainian border sector - 1250 persons, the indicator being increased by 9% compared to the same period of 2014 as a result of the increase of persons' flow on the respective sector.

An increase of refusals was fixed on the Moldovan-Romanian border segment, 24% more

compared to SEM 1'2014. For this segment, in large part, the increase was influenced by the increasing mobility of Moldovans as a result of the liberalization of the visa regime with the EU. Also, the share of refusals of the total number, increased by 2 percentage points from 19% to 21% compared to SEM 1'2014.

On the airline sector was refused the entry to 317 persons, an increase of 10% compared to January-June 2014. In fact, on this border segment increased the number of refusals on account of Moldovan citizens and the Russian Federation citizens, with a share of 52% and 18% respectively.

Refusal indicators of crossing-border state, general information, persons						
	SEM1'2014	%	SEM1'2015	%	Dynamics	%
Total	1741	100%	1979	100%	↗	14%
MDA-UKR sector	1142	66%	1250	63%	↗	9%
MDA-ROU sector	331	19%	412	21%	↗	24%
Airline border	268	15%	317	16%	↗	18%

The main reasons that determined the refusal of state border crossings in the reference period for persons who were present at crossing points were: invalid travel documents (persons trying to cross the border based on the expired document, the internal document (identity card) or unaccompanied minor without power of attorney), recorded existence of consignments, non-justification of purpose of travel or minors not accompanied by an adult.

For most of the indicators mentioned was characteristic the increase in the number of

refusals, due to measures taken by border policemen to meet the legal requirements for crossing the border.

Thus, there was an increase in the number of refusals of indicators: expired term of document (28%), consignment (15%), damaged document (2 times), and failure to justify the purpose of travel (42%) and invalid document (30%). A less significant increase was observed for indicators: the lack of the ID attachment (9 cases) and the lack of documents (12 cases).

REM Indicator

Refusal at the entry in RM

REM indicator, general information						
	SEM1, 2014	%	SEM1, 2015	%	Dynamics	%
Total	381	100%	337	100%	↓	-12%
MDA-UKR sector	173	45%	102	30%	↓	-41%
MDA-ROU sector	95	25%	100	30%	↗	5%
Airline border	113	30%	135	40%	↗	20%

According to statistical data, the indicator of refusal to entry in the RM, which specifically refers the foreign citizens, registered a decrease in the number of persons who were refused to enter the country, with 12% less compared to January-June 2014. This tendency was valid for the MDA-UKR border sector.

However, for the MDA-ROU sector and airline border was characteristic an increase of refusal to entry the country, generated by the increase of the mobility of persons in those sectors.

IEM Indicator

Interdiction at the exit from RM

IEM indicator, general information						
	SEM1, 2014	%	SEM1, 2015	%	Dynamics	%
Total	1360	100%	1642	100%	↗	21%
MDA-UKR sector	969	71%	1148	70%	↗	18%
MDA-ROU sector	236	17%	312	19%	↗	32%
Airline border	155	11%	182	11%	↗	17%

Indicator of interdiction for exit from RM, which is attributable to the Moldovan citizens, indicating an increase in the number of persons to be allowed to leave the country by 21% more compared with the first half of 2014.

This tendency is present for all sectors of border. However, the most significant increase of interdictions of exit was recorded on

the border sector with Romania, with 32% more compared with SEM 1 2014.

In addition, this indicator increased in most reasons for which was interdicted the exit, the exception being the interdictions based on lack of visa and minors who did not have valid documents.

Violation of border legislation

During January-June of 2015, the Border Police has registered 1863 cases of violation of the border legislation involving 2180 persons. Compared to the same period of the last year the number of persons increases by 16% compared to SEM 1'2014;

Number of persons documented for violation of border legislation in BCP, in the analysed period was increased by 35% compared to first 6 months of 2014. The

increase is present for all indicators related to characterize the operational situation at the BCP. The violation of rules of stay is an indicator which accounts a share of about 50% of the total incidents recorded in BCPs.

For the "green" border sector the number of cases concerning violation of the border legislation, is down 16% compared to the same period of 2014. The decrease is observed for all indicators of the border sectors.

Countering the violation of border legislation										
Border sector	SEM 1'2014				SEM 1'2015				Dynamics, %	
	cases	%	Pers.	%	cases	%	Pers.	%	cases	pers.
Total	1506	100%	1881	100%	1863	100%	2180	100%	24%	16%
"Green" border	468	31%	796	42%	439	24%	714	33%	-6%	-10%
BCPs	1038	69%	1085	58%	1424	76%	1466	67%	37%	35%

Violation of border at the "green" sector

If we analyze violations depending on the purpose, including the border sectors, then for the GB the highest number of border legislation violation is on account of VBR (poaching, staying without a permit in the border

area, at rest, the chopping of wood, etc.) with a share of over 60% of the total.

Accordingly, the violations recorded in this indicator, decreased compared to the same period of 2014.

Violation of border at BCPs

As specified above, most violations of the border legislation in BCP border (about 50% of the total) are on account of violation of rules of stay (VRS). Analysing the statistical data by regional subdivisions then the most VRS were stated at the sectors subordinated to Northern Regional Directorate - 246 persons, 50% of the

total number of violations found in this sector or over 35% of the violations found in the BCP on this indicator.

Thus, similar to those analyzed in the case of infringements at the GB we can notice that all regional subdivisions are more or less vulnerable also in BCPs.

Results of checking documents

Results of checking documents						
	SEM 1, 2014		SEM 1, 2015		Dynamics, %	
	Pers.	%	Pers.	%		
TOTAL	141	100%	245	100%	↗	74% 100%
Counterfeit documents	59	42%	88	36%	↗	47%
Forged document	78	55%	148	60%	↗	90%
Doesn't belong to holder	4	3%	9	4%	↗	by 2 times

Regarding forgery and use of forgery were registered 245 breaches committed by traffic participants, who presented to border control either for them or for transport that traveled, acts that did not meet the necessary conditions for border crossing. However, in the first 6 months of 2015 was recorded an increase of over 70% of cases of forgery and counterfeiting of documents found by the border policemen compared to the same period of 2014.

Analyzing the number of cases of false documents we can mention that 60% of them were found on UKR-MDA border segment. Moreover, on MDA-UKR border segment was registered a 3-fold increase of cases detected. On

ROU-MDA border segment was recorded an increase of 7% compared with January-June 2014, with a share of 26% of total cases detected. Most cases of presenting of counterfeit travel documents, forged or foreign, were detected at BPS "Chisinau International Airport" - over 50% of the total.

The share of forgery of documents detected at SBP "Chisinau International Airport" is 14% overall, increasing by 13% compared to January-June 2014. Numerically, however, counterfeits detected increased only by 4 units. In general, crossing the state border by persons using counterfeit travel documents, forged, foreign documents aim the illegal migration.

PART II Risk Analysis

Illegal migration

The illegal migration is an alternative used by persons who use illegal means to get abroad.

At the illegal border crossing, the migrants often use different forms and methods including:

- illegal border crossing on the "green" sector;
- crossing the border through BCPs on the basis of forged / counterfeit, foreign documents;
- crossing the border by hiding in vehicles.

Regarding the illegal migration by the subdivisions of the Border Police, there were registered 54 events involving 78 persons, which

is an increase of approximately 40% compared to SEM 1'2014.

In the first half of 2015 the largest number of illegal migrants were caught in BCPs, holding a share of 70% of the total number being a significant increase of 5 times compared to the same period of 2014.

Meanwhile, on the "green" sector of the border the number of persons detained has decreased by 50%. This decrease was influenced by the decrease in the number of illegal migrants detained on the Moldovan-Ukrainian sector.

Illegal migration (detained persons)				
Sectors	SEM 1, 2014	SEM 2, 2014	SEM 1, 2015	Comparison with 2014, SEM 1
Total	56	44	78	39%
MDA-UKR	34	8	25	-26%
MDA-ROU	15	19	28	87%
Airline border	7	17	25	+ by 3,6 times

Illegal traffic of cigarettes and tobacco products

Illegal trafficking of cigarettes has grown particularly in recent years at the borders of the Republic of Moldova. Traffickers count on impressive profit they can get from selling on the black markets in EU countries where the price of a pack of cigarettes is much higher than in RM. Despite the fact that in recent years taxes on tobacco products in the Republic of Moldova have been increased several times, anyway the cigarettes are cheapest in the EU. This difference is the main factor stimulating smuggling.

Thus, by the subdivisions of the Border Police - independently or in cooperation with

representatives of other relevant institutions - have been documented 92 cases of cigarette smuggling, were raised about 176,000 packs of cigarettes.

Compared with SEM 1'2014, the number of cases increased by 18%, while the amount of cigarettes detained decreased by 7%. These cases were registered both on the "green" sector of the state border and at BCPs. The largest share of cases documented by the Border Police holds the Moldovan-Romanian border, with 80 per cent of the total.

Smuggling with cigarettes, general information				
	SEM 1'2014	SEM 2'2014	SEM 1'2015	Comparison with SEM 1'2014
TOTAL				
cases	78	76	92	18%
persons	90	104	113	26%
quantity	188 892	219 365	175 774	-7%

Analysing the situation of the events of cigarette smuggling and tobacco products on border sectors, we find that on the "green" sector was raised the most part of the contraband cigarettes, over 128 thousand packs of cigarettes in 16 cases.

In such activities, usually are involved persons from the localities situated in the close proximity to the border, because it is an important source of income for them. They work in groups and resort to various methods of performing the criminal purpose.

In border crossings, the number of events of cigarette smuggling has also increased significantly by 23% compared to SEM 1'2014. However, a more dynamic situation, in this sense is observed at SBP "Chisinau International Airport", where the number of cases detected has increased more than 2 times. Analysis of cases of detention of tobacco products at the crossing points, confirms that persons have adapted their actions so that the value of cigarettes to correspond to small amounts (around 700 packets of cigarettes of premium class). The most common were transported the brands: Winston (31 cases), Marlboro (21 cases), Rothmans (17 cases), Kent (9 cases).

Illegal traffic of alcohol and alcoholic products

In the first half of 2015 the illicit traffic of alcohol and alcoholic products continued to persist at the state border of the Republic of Moldova. Based on statistical data compiled by this type of smuggling is specific to the segment of the Moldovan-Ukrainian border. This phenomenon has as main reason the gap between prices on "black markets" for alcohol in the Republic of Moldova and Ukraine.

Comparing the magnitude of the phenomenon of alcohol smuggling for SEM 1'2015 with the same period of 2014, we find that cases of illicit trafficking of alcohol and alcoholic products were recorded both on the "green border" as well as at the BCP. However,

the larger amounts were recorded on the "green" border.

Thus, in the period under review were documented 23 cases of illegal trafficking of alcohol and alcoholic products, this indicator increased by 35% compared to the same period of 2014. Similarly, the total quantity of alcohol retained increased significantly, with over 60% compared to SEM 1'2014. Much of the increase was due to the documented cases on the "green" border, where the high amount of alcohol was 9 times higher than the same period of 2014. In BCPs the amount of alcohol retained increased about 3.5 times.

Illegal traffic of alcohol and alcoholic products							
	SEM 1'2013		SEM 1'2014		SEM 1'2015		Comparison SEM 1'2015 with SEM 1'2014
	detention	crossing	detention	crossing	detention	crossing	
TOTAL							
cases	6	1	16	1	18	5	35%
persons	8	-	13	1	24	4	+ by 2 times
amount	308,5	1 800	12 834,25	100	6 449,5	14 478	62%

The phenomenon of smuggling of alcohol and alcoholic products was recorded mainly in the area of responsibility of the Northern Regional Directorate (61 per cent), where was found a quantity of more than 13.5 tons of alcohol and alcoholic beverages, followed by Southern Regional Directorate (26 per cent) with an amount of about 7 tons of

alcohol and alcoholic products. This phenomenon, on the "green" sector intensified particularly in June month of this year, where there were six incidents and about 4 tons of alcohol raised, mainly in the area of responsibility of the Northern Regional Directorate.

Illegal traffic of transport units

In the analysed period, the employees of the Border Police in BCPSs registered 68 cases of illegal traffic of vehicles. Compared to the same period of 2014 the number of transport units increased by 15%.

The increase was due to cases registered at the Moldovan-Romanian border as a result of increase mobility of the Moldovan citizens after liberalization of visa regime with EU.

Illegal traffic of transport units				
Sector	SEM 1 2014	SEM 2 2014	SEM 1 2015	Compared to SEM 1'2014
TOTAL	59	51	68	15 %
Reasons of stopping at BCPs				
Modified car body number	4	4	13	+ 3,2 by times
Modified number of engine or does not coincide with that indicated in registration certificate	6	6	1	- by 6 times
False / falsified certificate of registration	9	11	13	44 %
False / falsified power of attorney	39	28	40	3 %
Document not belonging to holder	-	-	-	-
Others	1	2	1	=

Thus, compared to SEM 1'2014, we see an increase of the number of breaches on the main reasons that served as grounds for stopping the transport units at border crossing points.

The number of events recorded regarding the forged powers of attorney issued increased slightly. Actions on forging the powers of attorney, in most cases occurs to transport of the old model, registered in Bulgaria, Romania, Lithuania and Poland. In this chapter the phenomenon in question is favoured by the following factors:

- Neglect of persons who purchase cars;
- Ignorance and disregard of legal procedures of taking possession;
- Loss of links between vendors and owners;
- Easy way of making these acts because of the lack of protective elements;
- Taking advantage of the fact that some citizens do not report possible fraud, the interested persons falsify the power of attorneys and sell

the means of transport on the territory of the Republic of Moldova at a lower price than the market price or use the territory of the Republic of Moldova as a transit zone to Eastern Europe.

At the same time increased the number of cases of detection of false registration / counterfeit certificates (44%) and modification of VIN code (more than 3 times). Such cases were fixed both on the border sector MDA-UKR, as well as MDA-ROU.

The attempt to introduce the means of transport with counterfeit VIN code, using the authentic registration numbers and documents (eg car theft in country X, and its re-registration in country Y ad its transportation in RM) is a method often used by traffickers.

Given the geographical position, Republic of Moldova is used as a transit channel for illicit transportation of transport units from EU to CIS countries.

Illegal traffic of arms and ammunition

During the first six months of 2015, according to statistics the subdivisions of the Border Police recorded 10 cases of illegal circulation of arms and ammunition. Following the control of the means of transport and luggage were found four pneumatic guns and 75 cartridges. Compared to the previous year is observed a diminishing by 29% of the number of registered cases. At the same time we see that

the number of ammunitions retained remained virtually the same, regardless of the fact that the number of cases decreased.

The most cases were fixed at the exit from the Republic of Moldova with a share of 70% of the total registered. In the illegal movement of arms and ammunitions have largely been involved Moldovan citizens.

Illegal traffic of arms and ammunition			
	SEM 1'2014	SEM 1'2015	Compared with SEM 1'2014
TOTAL			
cases	14	10	-29%
persons	15	10	-33%
ammunitions (cartridges), units	74	75	1%
Weapons, units	4	4	=
Others	4	-	-100%

If we analyse the situation after the number of cases and ammunition detained on border segments, then the largest share holds the airline border segment, followed by segment UKR-MDA and MDA-ROU.

However, as a result of documentation of cases, it was determined that an important

factor underlying these violations is non-informing persons, intending to cross the state border, presenting for the border control with undeclared ammunition in the luggage.

Illegal circulation of narcotic, psychotropic substances and precursors

In the first half of 2015 by the Border Police subdivisions there were no cases registered of illegal circulation of narcotic and psychotropic substances and of precursors.

However, to combat the consumption and illicit drug trafficking of drugs of vegetable origin, during the period June - August, is

carried out the operation "MAC-2015". As a result of measures undertaken in June they were documented six cases of cultivation of hemp, were destroyed 9486 plants and 1 case of cultivation of opium, with the destruction of 18 plants.
