



**MINISTRY OF INTERNAL AFFAIRS  
BORDER POLICE**

# **QUARTERLY REPORT**

## **on operational activity of the Border Police for 2013**

**Q' 1**

**Q' 2**

**Q' 3**

**Q' 4**

**QUARTERLY REPORT  
on operational activity of the Border Police in 2013**

**REPORT****on operational activity of the Border Police for Q'1, 2013****CONTENT:**

<b>EXECUTIV SUMMARY .....</b>	<b>4</b>
<b>Indicators of persons flows through BCP's.....</b>	<b>5</b>
<b>Indicators of transport means flow through BCP's .....</b>	<b>7</b>
<b>Refusal of the state border crossings.....</b>	<b>9</b>
<b>Violation of the border legislation.....</b>	<b>10</b>
<b>Results of documents control.....</b>	<b>12</b>
<b>Counterfeit documents.....</b>	<b>13</b>
<b>Falsified documents.....</b>	<b>13</b>
<b>Criminal prosecution activity .....</b>	<b>14</b>
<b>Finding of contraventions .....</b>	<b>15</b>
<b>Irregular migration.....</b>	<b>16</b>
<b>Trafficking of human beings .....</b>	<b>17</b>
<b>Cigarette smuggling.....</b>	<b>17</b>
<b>Illegal import-export of transport units.....</b>	<b>17</b>

## EXECUTIV SUMMARY

This report reflects the results of operational activity of the Border Police for the Q' 1, 2013. However, this report represents and the activity of some border subdivisions in particular. The document contains indicators, statistical and operational data, recorded and documented due to the supervision and control activity of the state border for the reference period, being made an analogy to the same period of 2012. Based on the analysis of specific indicators, the report gives an overview of the situation and of the security status at the state border of the Republic of Moldova. This indicators provide a picture of the operational situation, both in border crossing points, as well as on the "green" sector.

Broadly are highlighted briefly the main indicators per system, such as *the flow of people and vehicles, refusals of the state border crossings, counteracting cases of the border law violation, documents control, including counterfeit and falsified ones* etc. However, under the new powers and duties of the Border Police are highlighted the basic measures of the criminal activity, legal expertise and ascertainment of contraventions. Also, the document reflects an analysis and a summary of the main risks at the border, based on the statistical data and indicators. In particular, it was examined *the phenomenon of irregular migration, trafficking of human beings, cigarettes and vehicles smuggling*.

## Indicators of persons flows through BCP's

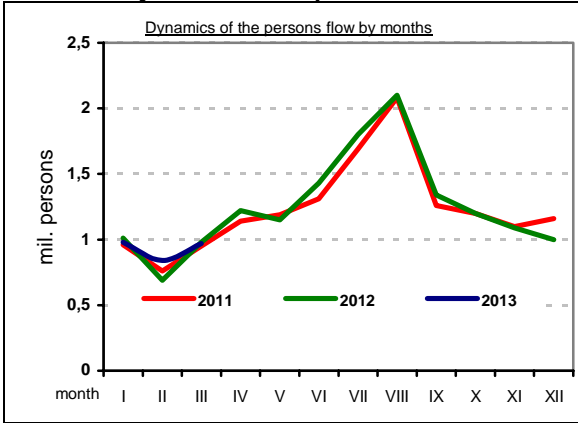
Indicators of persons flows at the state border of the Republic of Moldova (mil. pers.)							
Persons flow	2012		2013		Dynamics		
	Q'1	%	Q'1	%	Tendency	%	
<b>TOTAL Flow</b>	2,68	100%	2,79	100%	↗	4%	100%
<b>Republic of Moldova citizens</b>	1,91	71%	1,99	71%	↗	4%	
<b>Foreigners</b>	0,77	29%	0,80	29%	↗	4%	
The Flow at the Ukrainian border (without Transnistrian sector)							62%
<b>MDA-UKR Flow</b>	1,63	100%	1,72	100%	↗	5,5%	
<b>Republic of Moldova citizens</b>	1,18	72%	1,26	73%	↗	7%	
<b>Foreigners</b>	0,45	28%	0,46	27%	↗	2%	
The Flow at the Romanian border							30%
<b>MDA-ROU Flow</b>	0,85	100%	0,84	100%	↘	- 1%	
<b>Republic of Moldova citizens</b>	0,59	69%	0,58	69%	↘	- 1,7%	
<b>Foreigners</b>	0,26	31%	0,26	31%	→	=	
The Flow at the airline border							8%
<b>AERO Flow</b>	0,20	100%	0,23	100%	↗	15%	
<b>Republic of Moldova citizens</b>	0,13	65%	0,15	65%	↗	15%	
<b>Foreigners</b>	0,07	35%	0,08	35%	↗	14%	

In Q' 1, 2013 the people flow<sup>1</sup>, who crossed the state border of the Republic of Moldova was of 2.79 million crossings, registering an increase of 4% compared to the same period of 2012. The most noticeable increase of the traffic – with 15%, was observed at the air border, where the flow has registered about 230 000 crossings.

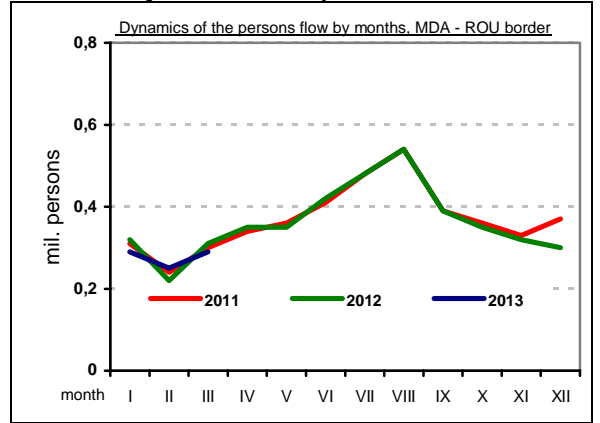
An increase of 5.5% compared to Q' 1, 2012, it is observed at the border with Ukraine, where the flow was of 1.72 million crossings. In the same time at the border with Romania the legal crossing indicator registered a slightly decrease – with 1% over the same period of 2012, representing 840 000 crossings.

<sup>1</sup> The people flow registered in the Border Police data base (without the central sector with Ukraine).

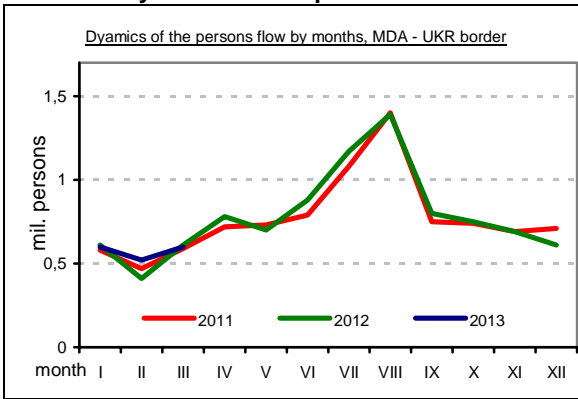
Dynamics of the persons flow



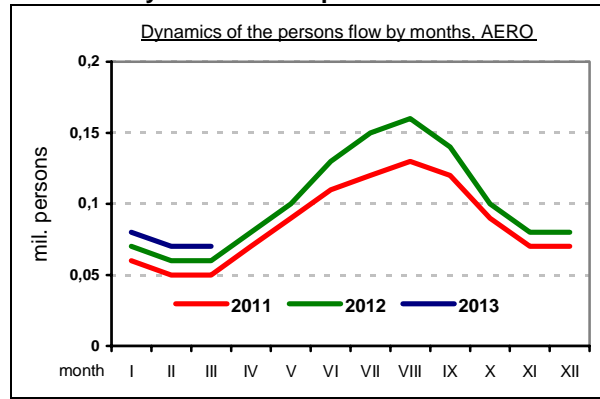
Dynamics of the persons flow



Dynamics of the persons flow



Dynamics of the persons flow



### Indicators of transport means flow through BCP's

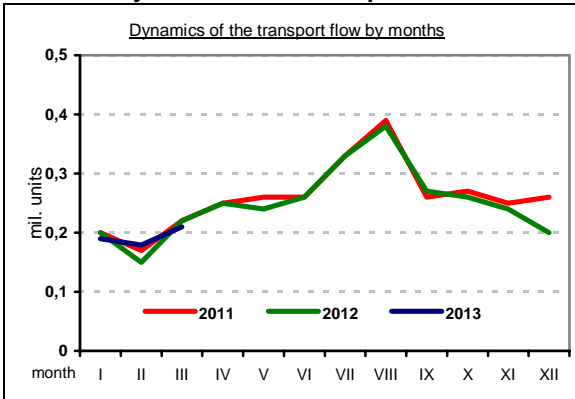
Indicators of transport flow at the state border of the Republic of Moldova (thousand units)							
Transport flow	2012		2013		Dynamics		
	Q'1	%	Q'1	%	Tendency	%	
<b>TOTAL Flow</b>	576	100%	580	100%	↗	0,7%	100%
<b>Transport of the Republic of Moldova</b>	330	57%	328	57%	↘	- 0,6%	
<b>Foreign Transport</b>	246	43%	252	43%	↗	2%	
The Flow at the Ukrainian border (without Transnistrian sector)							47%
<b>MDA-UKR Flow</b>	269	100%	275	100%	↗	2%	
<b>Transport of the Republic of Moldova</b>	201	75%	201	73%	→	=	
<b>Foreign Transport</b>	68	25%	74	27%	↗	8%	
The Flow at the Romanian border							52%
<b>MDA-ROU Flow</b>	305	100%	301	100%	↘	- 1%	
<b>Transport of the Republic of Moldova</b>	128	42%	125	42%	↘	- 2%	
<b>Foreign Transport</b>	177	58%	176	48%	↘	- 0,5%	
The Flow at the airline border							1%
<b>AERO Flow</b>	2,7	100%	3,2	100%	↗	18%	
<b>Republic of Moldova aircrafts</b>	1,4	52%	1,6	50%	↗	14%	
<b>Foreign aircrafts</b>	1,3	48%	1,6	50%	↗	23%	

During the Q' 1, 2013, the Moldovan state border was crossed by about 580 000 vehicles.<sup>2</sup> Compared to 2012, their number increased by 0.7%. At the same time, an increase of 18% of the transport's flow, from the previous year was registered at air border, here the traffic was of about 3 200 aircrafts.

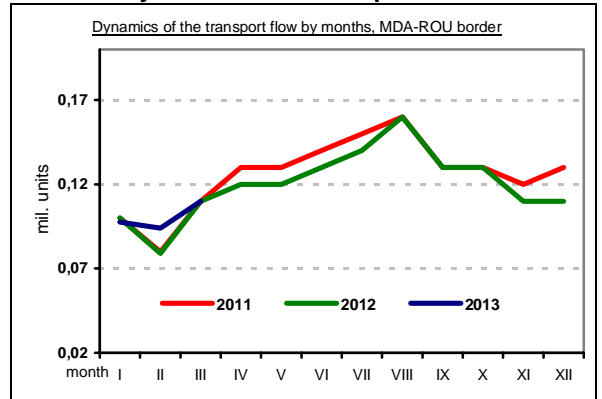
In the reference period the common border with Ukraine was crossed by 275 000 vehicles. Compared to the same period of 2012, it was observed an increase of 2%. However, at the border with Romania was registered a flow of 301 000 crossings, with 1% less than the Q' 1 of 2012.

<sup>2</sup> Vehicles flow registered by the Border Police data base (without the Central sector of the border with Ukraine)

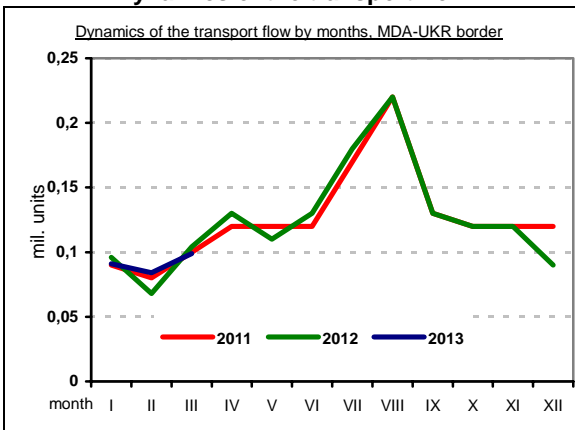
**Dynamics of the transport flow**



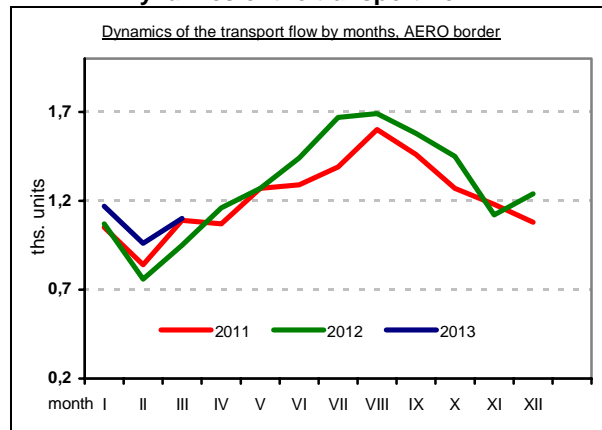
**Dynamics of the transport flow**



**Dynamics of the transport flow**



**Dynamics of the transport flow**



## Refusal of the state border crossings

During the reporting period by the subdivisions of the border control were refused to cross the state border, for 1 292 persons. Compared with the Q' 1, 2012 this indicator decreased with 1.6%. At the common border with Ukraine, were refused to to cross the border to 945 persons. So comparing with the previous year, it was

observed a decrease with 1.7%. For the border with Romania the number of people, who have been refused to cross the border was of 238 persons, down with 12% compared to 2012. However, at the air border there is an increase of refusals with 36%, compared to Q' 1 of the previous year, their number was of 109 citizens.

Indicators of the refusals of the state border, general information						
	Q' 1, 2012	%	Q' 1, 2013	%	Dynamics	%
<b>Total</b>	<b>1313</b>	<b>100%</b>	<b>1292</b>	<b>100%</b>	↓	-1,6%
<b>MDA-UKR Sector</b>	962	73%	945	73%	↓	-1,7%
<b>MDA-ROU Sector</b>	271	21%	238	19%	↓	-12%
<b>AERO</b>	80	6%	109	8%	↗	36%

## NPI indicator

### Refusals at the entrance in RM

NPI indicator, general information						
	Q' 1, 2012	%	Q' 1, 2013	%	Dynamics	%
<b>Total</b>	<b>231</b>	<b>100%</b>	<b>210</b>	<b>100%</b>	↓	-9%
<b>MDA-UKR Sector</b>	138	60%	92	44%	↓	-33%
<b>MDA-ROU Sector</b>	62	27%	67	32%	↗	8%
<b>AERO</b>	31	13%	51	24%	↗	64%

## NPE indicator

### Interdictions at the exit from RM

NPE indicator, general information						
	Q' 1, 2012	%	Q' 1, 2013	%	Dynamics	%
<b>Total</b>	<b>1082</b>	<b>100%</b>	<b>1082</b>	<b>100%</b>	→	=
<b>MDA-UKR Sector</b>	824	76%	853	79%	↗	3%
<b>MDA-ROU Sector</b>	209	19%	171	16%	↓	- 18%
<b>AERO</b>	49	5%	58	5%	↗	18%

The main reasons for refusals to cross the state border were: presentation at the border control with documents, which don't authorized the crossing; expired documents; unaccompanied minors or lack of legal documents proving their right; lack of visas

for foreign citizens, with whom Republic of Moldova had established a visa regime; overstays previously passed by foreigners and other reasons provided by the national law.

## Violation of the border legislation

In Q' 1, 2013, by the Border Police subdivisions, were recorded 594 cases of violations of the Republic of Moldova legislations, in which were involved 689 persons. Compared to the same period of

the previous year, the number of cases and persons stopped, increased with 38% and 31%, respectively. This increase it is observed both in BCP and on the "green" sector of the border.

Countering of the border law violations										
Border sector	2012, Q'1				2013, Q'1				Dynamics, %	
	case	%	Pers.	%	case	%	Pers.	%	cases	persons
<b>Total</b>	428	100%	526	100%	594	100%	689	100%	38%	31%
MDA – UKR	227	53%	267	51%	312	53%	361	52%	37%	35%
MDA – ROU	167	39%	219	42%	153	26%	199	29%	- 8%	- 9%
AERO	34	8%	40	7%	129	21%	129	19%	+ 3,8 times	+ 3,2 times
<b>Green border</b>	101	100%	178	100%	124	100%	206	100%	22%	16%
MDA – UKR	59	58%	98	55%	58	47%	96	47%	- 2%	- 2%
MDA – ROU	42	42%	80	45%	66	53%	110	53%	+ 1,5 times	37%
<b>BCP's</b>	327	100%	348	100%	470	100%	483	100%	43%	38%
MDA – UKR	168	51%	169	49%	254	54%	265	55%	51%	56%
MDA – ROU	125	38%	139	40%	87	19%	89	18%	- 30%	- 35%
AERO	34	11%	40	11%	129	27%	129	27%	+ 3,8 times	+ 3,2 times

## Violation of the "green" border

In the first three months of 2013, the subdivisions of the state border surveillance recorded 124 border violations, in which 206 persons were retained. Compared with the analyzed period of the previous year, this indicator increased with 22% and 16%, respectively.

Of the total cases identified for attempted of illegal border crossing, were retained 31 persons in 21 cases. At the entry into the country for illegal border crossing were stopped 22 people in 11 cases. Compared to 2012 there has been a decrease of these indicators.

The main goals pursued by those who have the intention and violated the state border, are the irregular migration, domestic reasons and smuggling activity. Under the joint actions in the first quarter of this year, were retained seven persons in three cases. Compared to 2012, the number of detected cases and persons are decreasing.

According to statistics, in the reference period, the largest number of documented

persons has been for, violation of the border regime – 146 persons in 89 cases. Compared to 2012 this indicator increased by 1.7 times in cases and by 49% for persons.

In most cases, the violation of the border regime was committed by residents, who are living near the border. Their main reasons were classified as household activities.

At the same time during the reporting period have been recorded and cases of uncontrolled illegal crossing of the state border, as well as detection of traces of the illegal border crossing.

Thus, during the last three months, from the information received from border representative meetings and exchanges of information with border services of neighbouring states, there were 23 cases of illegal crossings, where were involved 38 persons. It was registered 9 cases of "traces".

### Violation of the state border in BCP's

In the first quarter of 2013, subdivisions of the border control had stopped 483 persons, who have violated the laws of Republic of Moldova. Compared to 2012, their number increase with 38%.

Of the total number of documented persons, a share of 66% constituted foreign citizens, who violated the rules of residence in Republic of Moldova. Compared with the Q' 1, 2012 this indicator increased by 1.9 times.

However, for the attempt to cross illegally the border were retained 69 persons, with 9% more than in 2012. For the illegally crossing of the state border were detected and retained 22 delinquent. Compared with the previous year, this indicator decreased by 18%.

Regarding the violation of the regime in the crossing points, in the reference period were documented 34 delinquent. Compared

to 2012, their number increased by 3.5 times. In the activity of counteracting of cross border crimes, within the joint customs measures, there were 34 cases of illegal transportation of goods across the state border. Of the total number of the documented cases in 30 of them were detected cigarettes smuggling.

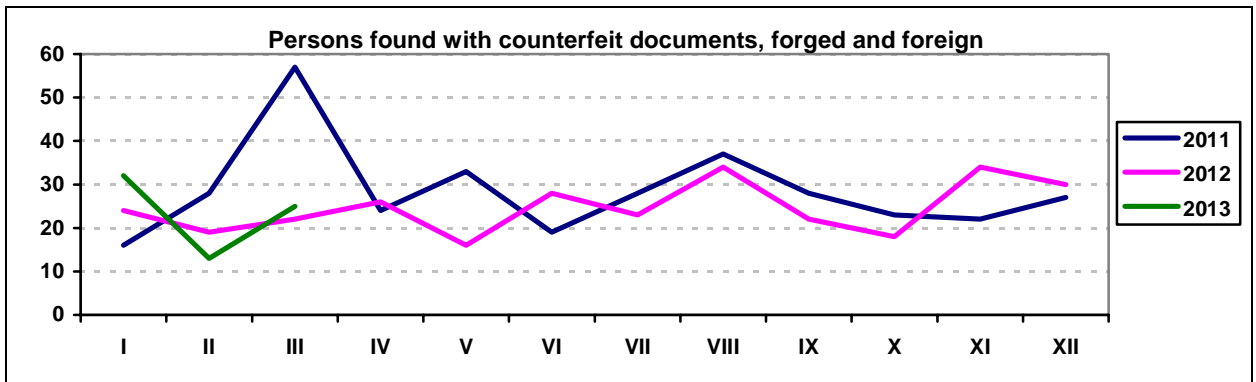
In order to detect the contraventions regarding the rules violation of exploiting the vehicles and those of the passenger traffic, by the Border Police inspectors were documented 11 such contraventions.

However, during the mentioned period, through the crossing points were recorded and cases of uncontrolled illegal crossing of the state border. Thus, from the data of the information exchange with partner services of neighbouring states were detected 8 cases, where were involved 8 persons.

**Results of documents control**

Results of the border control, detection of counterfeit documents, forged and foreign						
	Q' 1, 2012		Q' 1, 2013		Dynamics, %	
	Pers.	%	Pers.	%		
<b>TOTAL</b>	<b>65</b>	<b>100%</b>	<b>70</b>	<b>100%</b>	↗	7%
Counterfeit document	38	58%	39	56%	↗	2%
Forged document	21	32%	27	38%	↗	28%
Person substitution	6	10%	4	6%	↘	-33%

100%



## Counterfeit documents

Counterfeit documents						
	Q' 1, 2012	%	Q' 1, 2013	%	Dynamics, %	
<b>TOTAL</b>	<b>38</b>	<b>100%</b>	<b>39</b>	<b>100%</b>		<b>2,6%</b>
Passport	3	8%	-	-		- 100%
ID	2	5%	1	3%		- 2 times
Visa	4	11%	-	-		- 100%
Residence permit	2	5%	1	3%		- 2 times
Document of attorney	14	37%	32	82%		+ 2,3 times
Technical inspection certificate	-	-	-	-	-	-
Driving license	5	13%	1	3%		- 5 times
Document of attorney for minors	-	-	-	-	-	-
Registration certificate of the vehicles	8	21%	4	10%		- 2 times

Counterfeit documents Q' 1, 2013		
Type of document	Country	No.
ID	ROU	1
Residence permit	ITA	1
Document of attorney	BGR	17
	ITA	4
	ROU	3
	GBR	2
	LTU	2
	FRA	1
	DEU	1
	POL	1
Registration certificate	SWE	1
	MDA	4
Driving license	ROU	1

## Falsified documents

Falsified documents						
	Q' 1, 2012	%	Q' 1, 2013	%	Dynamics, %	
<b>TOTAL</b>	<b>21</b>	<b>100%</b>	<b>27</b>	<b>100%</b>		<b>28%</b>
Passport	2	10%	6	23%		+ 3 times
ID card	-	-	-	-	-	-
Visa	-	-	-	-	-	-
Residence permit	-	-	-	-	-	-
Document of attorney	-	-	-	-	-	-
Roadmap	-	-	2	7%		100%
Driving license	-	-	-	-	-	-
Document of attorney for minors	-	-	-	-	-	-
Registration certificate of vehicle	2	10%	3	11%		50%
Green card	17	80%	16	59%		- 5,9%

Falsified documents, Q' 1, 2013			
Falsification methods	Type of document	Country	No.
Data alteration	Registration certificate	GBR	1
		CZE	1
		NLD	1
	Roadmap	MDA	2
Passport	MDA	1	
	Substitution of a document fragment	ROU	3
MDA		1	
ISR		1	

### Criminal prosecution activity

Judicial expertise (forensic)						
	No. assigned to forensic	No. examined items	Document title	Cod ISO	Conclusion	
Technical examination of documents	1	1	Passport	ISR	spurious	
	2	1	Passport	MDA	authentic	
	3	2	2 green cards	MDA	2 counterfeit	
	4	1	Registration certificate	MDA	counterfeit	
	5	3	3 green cards	MDA	3 forged	
	6	1	Attorney	ITA	stamp cliché	
	7	1	Green card	MDA	spurious	
	8	1	Green card	MDA	counterfeit	
	9	1	Attorney	ITA	stamp cliché	
	10	1	Registration certificate	GBR	spurious	
	11	1	Passport	ROU	spurious	
	12	1	Attorney	BGR	stamp cliché	
	13	1	Attorney	ITA	counterfeit	
<b>TOTAL</b>	<b>13</b>	<b>16</b>				
					Authentic	1
					Counterfeiting	5
					Falsified	7
					Printing method	3

Technical-scientific finding						
	No. assigned to technical-scientific finding	No. examined items	Document title	Cod ISO	Conclusion	
Technical examination of documents	1	1	Attorney	BGR	stamp cliché	
	2	1	Registration certificate	NLD	spurious	
	3	1	Passport	ROU	spurious	
	4	1	Attorney	BGR	counterfeit	
	5	1	Attorney	BGR	counterfeit	
	6	1	Passport	ROU	spurious	
	7	1	Green card	MDA	authentic	
	8	1	Attorney	ROU	counterfeit	
	9	1	ID card	ROU	counterfeit	
	10	1	Attorney	BGR	stamp cliché	
	11	1	Attorney	BGR	stamp cliché	
	12	1	Roadmap	MDA	spurious	
	13	1	Roadmap	MDA	spurious	
<b>TOTAL</b>	<b>13</b>	<b>13</b>				
					Authentic	1
					Counterfeiting	4
					Falsified	5
					Printing method	3

## Finding of contraventions

In the first quarter of 2013, in terms of contraventions were recorded the following indicators:

### Art. 331 Contravention code (CC)

BPD Subdivision	Total minutes concluded	Fines Applied/Received (Lei)	Challenges (No. of result)	Forced execution (no. trials)
Total	1	1000 / -	-	-

### Art. 332 paragraph (1) Contravention code (CC)

BPD Subdivision	Total minutes concluded	Fines Applied/Received (Lei)	Challenges (No. of result)	Forced execution (no. trials)
Total	147	38 300 / 16 150	-	5 trials

### Art. 332 paragraph (2) Contravention code (CC)

BPD Subdivision	Total minutes concluded	Fines Applied/Received (Lei)	Challenges (No. of result)	Forced execution (no. trials)
Total	11	10 000 / 2 500	-	-

### Art. 332<sup>1</sup> paragraph (1) and paragr. (3) Contavention code (CC)

BPD Subdivision	Total minutes concluded	Fines Applied/Received (Lei)	Challenges (No. of result)	Forced execution (no. trials)
Total	26	64 000 /29 000	-	-

### Art. 333 paragraph (1) Contravention code (CC)

BPD Subdivision	Total minutes concluded	Fines Applied/Received (Lei)	Challenges (No. of result)	Forced execution (no. trials)
Total	374	433 600 / 161 500	-	-

### Art. 333 paragraph (2) Contravention code (CC)

BPD Subdivision	Total minutes concluded	Fines Applied/Received (Lei)	Challenges (No. of result)	Forced execution (no. trials)
Total	73	49 600 / 21 200	-	-

### Minutes submitted to the other jurisdiction bodies

	Total minutes concluded
Total	14

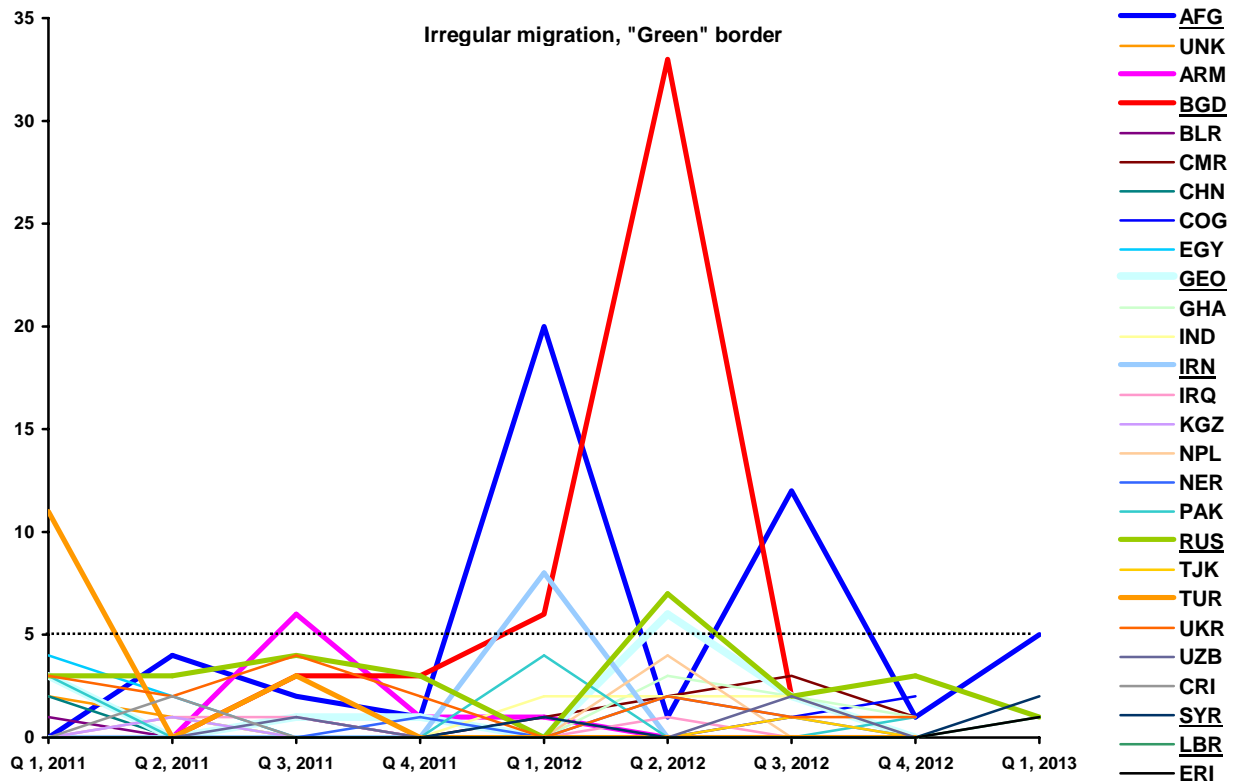
As a result of establishing contraventions, by the agents of the Border Police were registered 646 of minutes, the total sum of fines was of 601 300 lei, of these were charged fines of 232 500 lei.

### Irregular migration

In Q' 1, 2013, by the Border Police subdivisions were identified 20 citizens, who had the intention to violate the state border, their purpose was the irregular migration. Compared with 2012, their number decreased by 2.3 times. Most of them, i.e. 16 migrants were detained on the "green" sector of the border, other 4 were detected in BCP. According to the statistics, in this year the maximum share of the total number

of detected migrants was recorded at the border with Ukraine. However, compared to previous years, the majority of cases were at the border with Romania. Despite this, in the reference period, by the border services of neighboring states were registered cases of uncontrolled illegal crossing of the border, involving 13 migrants. Most of them, passed the border on the Romanian sector of the border.

Irregular migration, indicator recorded by Border Police										
Border	Q 1, 2011	Q 2, 2011	Q 3, 2011	Q 4, 2011	Q 1, 2012	Q 2, 2012	Q 3, 2012	Q 4, 2012	Q 1, 2013	Compared with 2012, Q1
Total	71	43	69	28	46	84	37	27	20	- 2.3 times
MDA-UKR	23	14	23	9	15	16	11	4	16	+ 6.6%
MDA-ROU	43	25	44	17	25	63	26	19	3	- 8.3 times
AERO	5	4	2	2	6	5	0	4	1	- 2 times



## Trafficking of human beings

In the first three months of this year, inspectors of the Border Police in the border control activity were identified 12 persons involved in trafficking of human being. Compared to the same period of 2012, their number increased by 33.3%. In border areas, there is a rise of the number

of persons identified on the border with Ukraine, from 2 persons detained in 2012, to 7 persons in 2013. At the border with Romania, cases of trafficking have not been recorded. However, in the Q' 1, 2013 at the air border were detected 5 persons or with 28% less than in 2012.

Fight against human trafficking										
Border	Q 1, 2011	Q 2, 2011	Q 3, 2011	Q 4, 2011	Q 1, 2012	Q 2, 2012	Q 3, 2012	Q 4, 2012	Q 1, 2013	Compared With 2012, Q1
Total	6	13	5	5	9	9	5	12	12	+ 33.3%
MDA-UKR	0	3	0	0	2	2	0	6	7	+ 3,5 times
MDA-ROU	2	0	0	5	0	2	0	3	0	=
AERO	4	10	5	0	7	5	5	3	5	- 28%

## Cigarette smuggling

In the first three months of 2013, by the subdivisions of the Border Police were recorded 37 cases of illegal transportation of cigarettes, where were involved 40 persons. It was detained 41 161 packages of cigarettes. Compared to the same period

of 2012, the number of cases, involved persons and the quantity of detected cigarettes decreased by 46%, 42% and 14%, respectively. All cases documented by the Border Police, took place at the border with Romania.

Smuggling of tobacco products, general information						
	Q 1 2012	Q 2 2012	Q 3 2012	Q 4 2012	Q 1 2013	Compared with 2012, Q 1
<b>TOTAL</b>						
Cases	69	74	44	28	37	-46%
Persons	69	78	42	29	40	-42%
Quantity	48 016	114 399	52 878	38 615	41 161	-14%

## Illegal import-export of transport units

In Q' 1 2013, the border control subdivisions stopped 42 vehicles that were predestined for illegal import/export to/from Moldova. Compared with the similar period of 2012, the number of retained vehicles increased by 45%. The main reasons that served as grounds for stopping were: the modification

of car body, the modification of engine number, presentation for border control of the counterfeit registration certificates and counterfeit attorney with powers to drive the transport unit.

Illegal import/export of transport units						
Reason for stopping	Q' 1 2012	Q' 2 2012	Q' 3 2012	Q' 4 2012	Q' 1 2013	Compared with 2012, Q' 1
<b>TOTAL</b>	<b>29</b>	<b>36</b>	<b>46</b>	<b>46</b>	<b>42</b>	<b>+ 45%</b>
No. of modified car body	1	6	3	5	4	+ 4 times
No. of modified engine	1	1	-	1	-	- 100%
False registration certificate	9	13	16	13	6	- 33%
False attorney	14	16	24	24	32	+ 2,2 times
Document not belong to holder	4	-	3	3	-	-100%